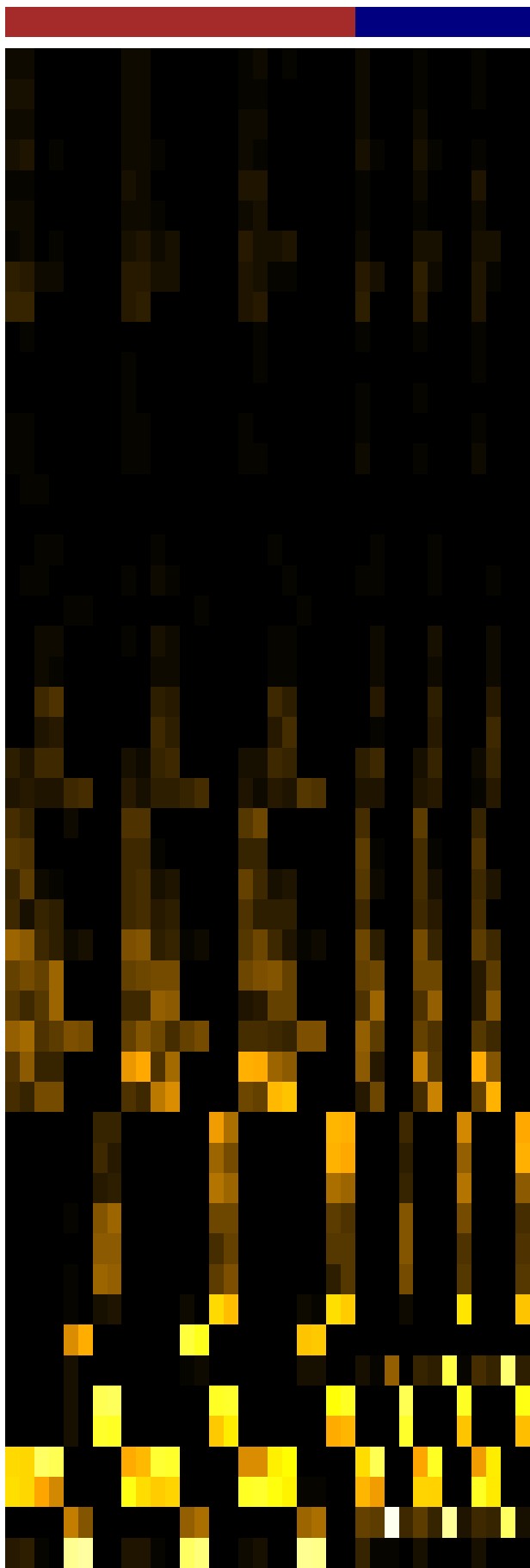
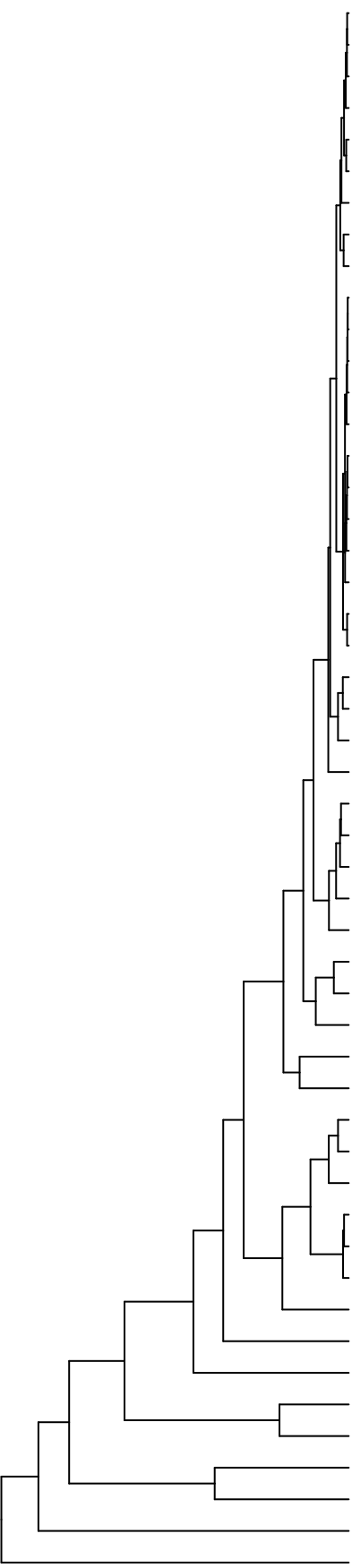




HL
■ T
■ F



- Kingella
- Saccharibacteria_(TM7)_[G-6]
- Aggregatibacter
- Selenomonas
- Peptidiphaga
- Lachnoanaerobaculum
- Gemella
- Campylobacter
- Haemophilus
- Dialister
- Arachnia
- Oribacterium
- Stomatobaculum
- Parvimonas
- Catonella
- Lachnospiraceae_[G-3]
- Peptoanaerobacter
- Bergeyella
- Erythrobacter
- Ottowia
- Ruminococcaceae_[G-1]
- Lautropia
- Abiotrophia
- Saccharibacteria_(TM7)_[G-1]
- Neisseria
- Corynebacterium
- Alloprevotella
- Rothia
- Granulicatella
- Fusobacterium
- Leptotrichia
- Capnocytophaga
- Prevotella
- Actinomyces
- Schaalia
- Listeria
- Limosilactobacillus
- Enterococcus
- Escherichia
- Pseudomonas
- Shigella
- Staphylococcus
- Truepera
- Allobacillus
- Bacillus
- Salmonella
- Veillonella
- Streptococcus
- Frondebacter
- Porphyromonas

F-12829_S02
 F-12829_S03
 F-12829_S05
 F-12829_S06
 F-12829_S08
 F-12829_S09
 F-12829_S11
 F-12829_S12
 F-12829_S14
 F-12829_S15
 F-12829_S17
 F-12829_S18
 F-12829_S20
 F-12829_S21
 F-12829_S23
 F-12829_S24
 F-12829_S26
 F-12829_S27
 F-12829_S29
 F-12829_S30
 F-12829_S32
 F-12829_S33
 F-12829_S35
 F-12829_S36
 F-12829_S01
 F-12829_S04
 F-12829_S07
 F-12829_S10
 F-12829_S13
 F-12829_S16
 F-12829_S19
 F-12829_S22
 F-12829_S25
 F-12829_S28
 F-12829_S31
 F-12829_S34

Genus

Samples