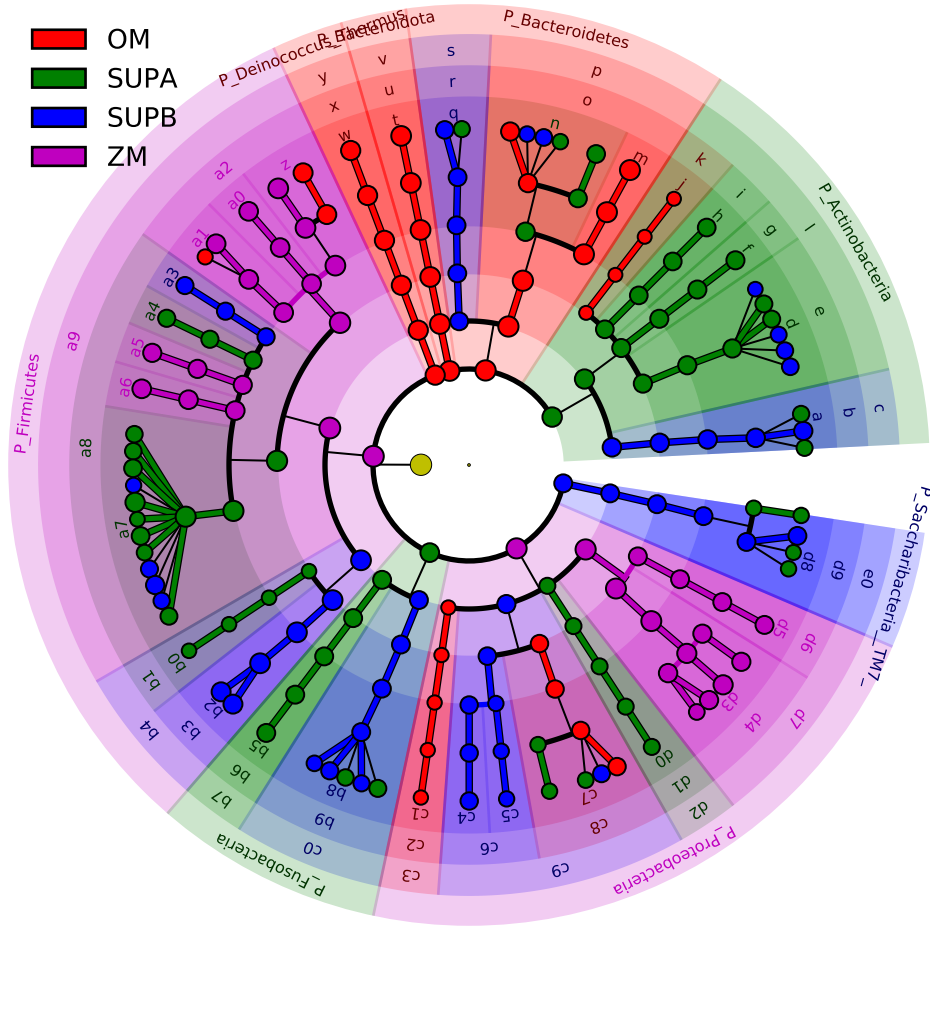


# Significantly Represented Taxa



- OM
- SUPA
- SUPB
- ZM

- a: F\_Actinomycetaceae
- b: O\_Actinomycetales
- c: C\_Actinobacteria
- d: F\_Actinomycetaceae
- e: O\_Actinomycetales
- f: F\_Corynebacteriaceae
- g: O\_Corynebacteriales
- h: F\_Micrococcaceae
- i: O\_Micrococcales
- j: F\_Nocardioideaceae
- k: O\_Propionibacteriales
- l: C\_Actinomycetia
- m: F\_Porphyromonadaceae
- n: F\_Prevotellaceae
- o: O\_Bacteroidales
- p: C\_Bacteroidia
- q: F\_Flavobacteriaceae
- r: O\_Flavobacteriales
- s: C\_Flavobacteriia
- t: F\_Flavobacteriaceae
- u: O\_Flavobacteriales
- v: C\_Flavobacteriia
- w: F\_Trueperaceae
- x: O\_Trueperales
- y: C\_Deinococci
- z: F\_Bacillaceae
- a0: F\_Listeriaceae
- a1: F\_Staphylococcaceae
- a2: O\_Bacillales
- a3: F\_Aerococcaceae
- a4: F\_Carnobacteriaceae
- a5: F\_Enterococcaceae
- a6: F\_Lactobacillaceae
- a7: F\_Streptococcaceae
- a8: O\_Lactobacillales
- a9: C\_Bacilli
- b0: F\_Peptoniophilaceae
- b1: O\_Clostridiales
- b2: F\_Veillonellaceae
- b3: O\_Negativicutes
- b4: C\_Clostridia
- b5: F\_Fusobacteriaceae
- b6: O\_Fusobacteriales