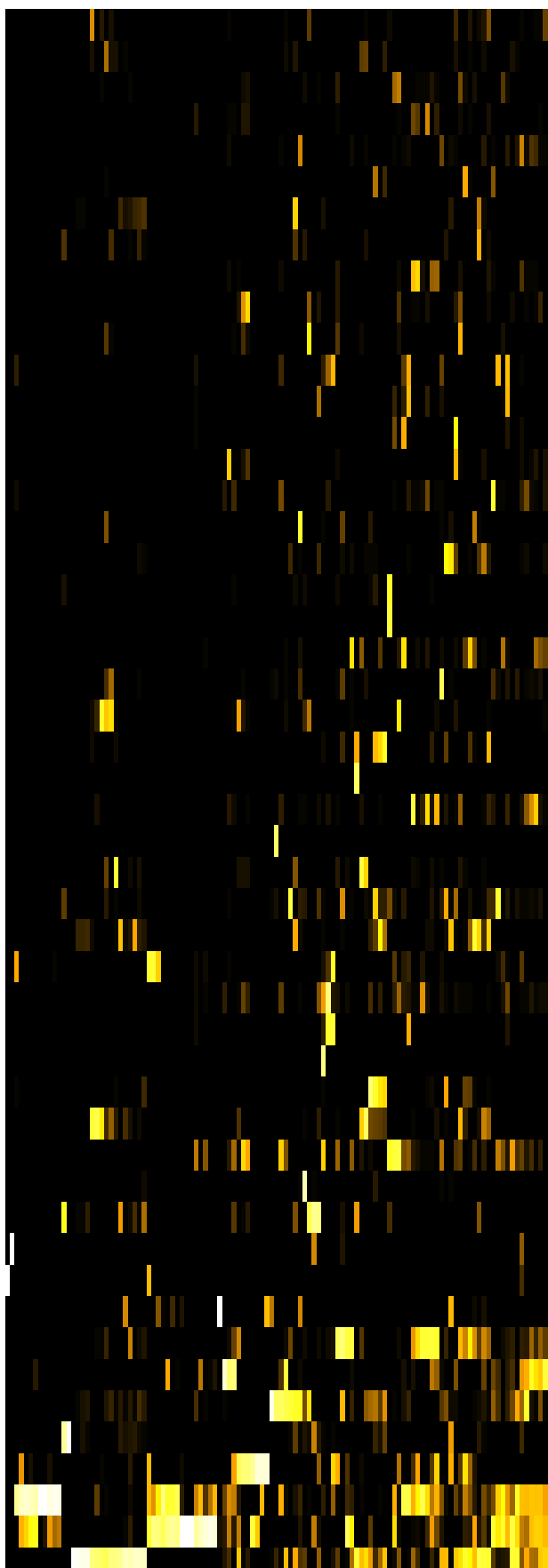
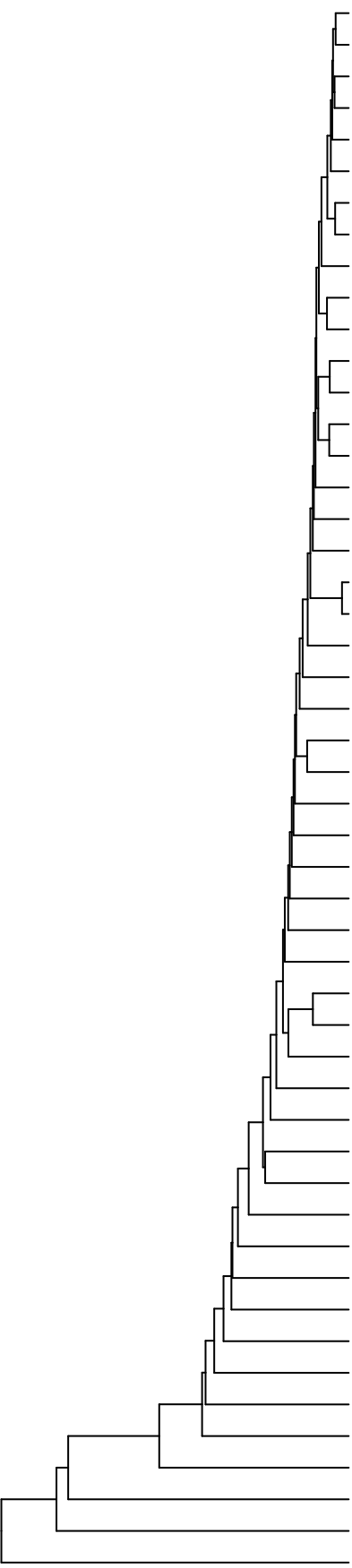


- Description2
- RC_NP_HPT
 - PT_NP_HPT
 - RC_VP_PP
 - PT_VP_PP
 - RC_NP_PP
 - PT_NP_PP
 - RC_VP_HPT
 - PT_VP_HPT



- Actinomycetaceae
- Carnobacteriaceae
- Prevotellaceae
- Lachnospiraceae
- Actinomycetaceae
- Methylobacteriaceae
- Moraxellaceae_Neisseriaceae
- Burkholderiaceae
- Treponemataceae
- Selenomonadaceae
- Leptotrichiaceae
- Bacteroidaceae
- Erysipelotrichaceae
- Atopobiaceae
- Saccharibacteria_(TM7)_[F-1]
- Synergistaceae
- Bacillaceae
- Micrococcaceae
- Comamonadaceae
- Gemmatimonadaceae
- Peptoniphilaceae_Peptostrictococcaceae_[XI]
- Aerococcaceae
- Veillonellaceae
- Xanthomonadaceae
- Isosphaeraceae
- Porphyromonadaceae
- multifamily
- Neisseriaceae
- Staphylococcaceae
- Pseudomonadaceae
- Eubacteriaceae
- Veillonellaceae
- Bacteroidaceae
- Dethiosulfovibrionaceae
- Moraxellaceae
- Pasteurellaceae
- Lachnospiraceae_[XIV]
- Enterobacteriaceae
- Oxalobacteraceae
- Acidobacteriaceae
- Blastocatellaceae
- Rhodobacteraceae
- Fusobacteriaceae
- Desulfobulbaceae
- Enterococcaceae
- Sphingomonadaceae
- Campylobacteraceae
- Peptostrictococcaceae_[XI]
- Peptoniphilaceae
- Streptococcaceae

- S043
- S055
- S057
- S054
- S101
- S096
- S027
- S020
- S089
- S095
- S107
- S056
- S059
- S044
- S062
- S112
- S114
- S032
- S063
- S094
- S093
- S107
- S004
- S002
- S016
- S012
- S067
- S018
- S020
- S008
- S106
- S017
- S026
- S015
- S075
- S090
- S081

Samples

Family