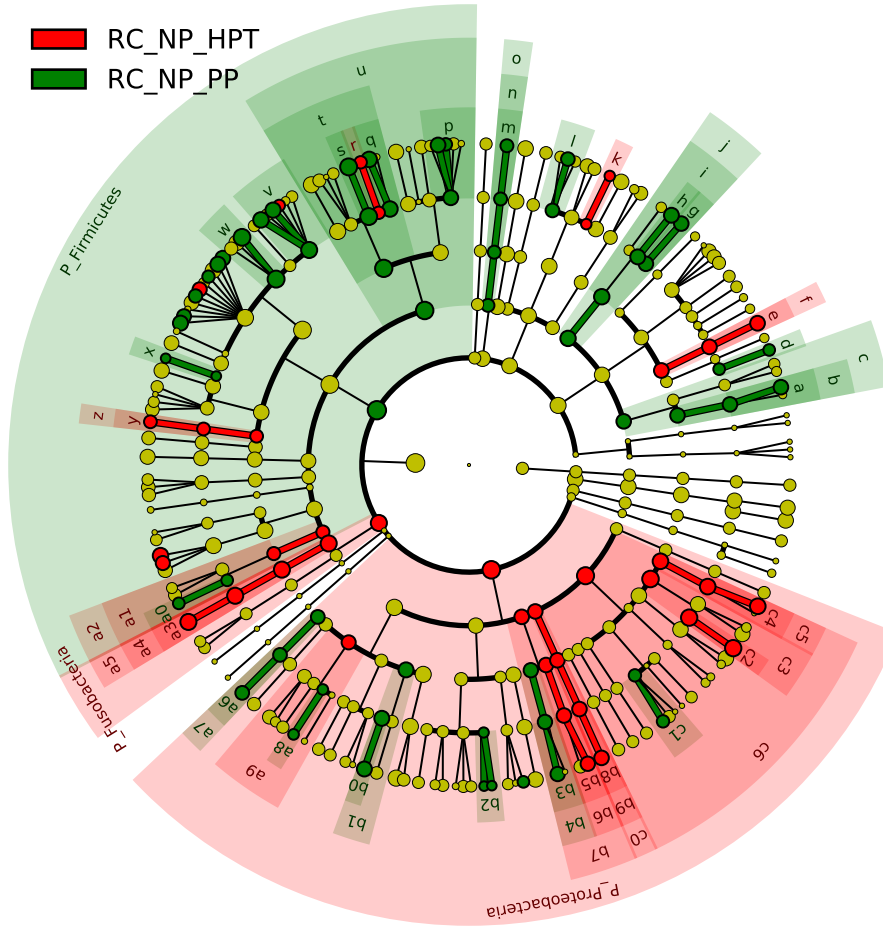


Significantly Represented Taxa



- a: F_Actinomycetaceae
- b: O_Actinomycetales
- c: C_Actinobacteria
- d: F_Actinomycetaceae
- e: F_Corynebacteriaceae
- f: O_Corynebacteriales
- g: F_Atopobiaceae
- h: F_Coriobacteriaceae
- i: O_Coriobacteriales
- j: C_Coriobacteria
- k: F_Bacteroidales_F_2_
- l: F_Prevotellaceae
- m: F_Weeksellaceae
- n: O_Flavobacteriales
- o: C_Flavobacteriia
- p: F_Bacillaceae
- q: F_Aerococcaceae
- r: F_Carnobacteriaceae
- s: F_Enterococcaceae
- t: O_Lactobacillales
- u: C_Bacilli
- v: F_Lachnospiraceae_XIV
- w: F_Peptoniphilaceae
- x: F_Clostridiaceae
- y: F_Veillonellaceae
- z: O_Negativicutes
- a0: F_Tissierellaceae
- a1: O_Tissierellales
- a2: C_Tissierellia
- a3: F_Fusobacteriaceae
- a4: O_Fusobacteriales
- a5: C_Fusobacteria
- a6: F_Caulobacteraceae
- a7: O_Caulobacteriales
- a8: F_Rhizobiaceae
- a9: O_Hyphomicrobiales
- b0: F_Rhodobacteraceae
- b1: O_Rhodobacterales
- b2: F_Oxalobacteraceae
- b3: F_Desulfobulbaceae
- b4: O_Desulfobacteriales
- b5: F_Desulfovibrionaceae
- b6: O_Desulfovibrionales