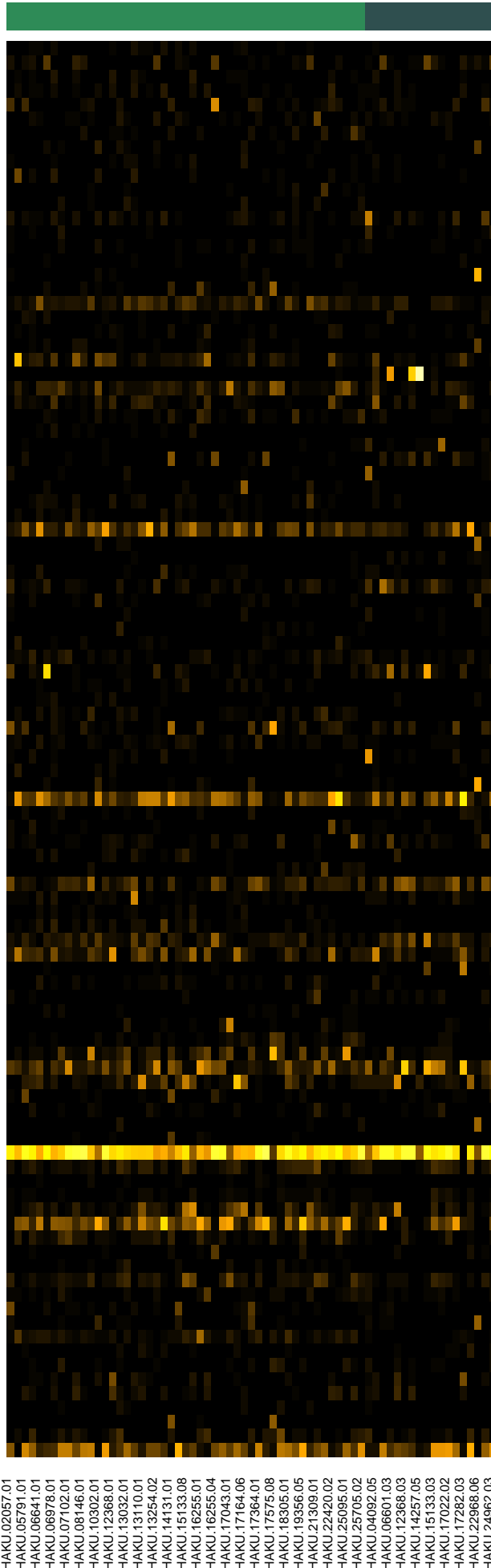




GROUP_AGE
 CHILD
 ADULT



- Lachnoanaerobaculum orale
- Neisseria oralis
- Megasphaera micronuciformis
- Prevotella salivae
- Veillonella sp._HMT_780
- Abiotrophia defectiva
- Porphyromonas gingivalis
- Dialister invisus
- Stomatobaculum longum
- Prevotella pallens
- Peptostreptococcaceae_[X1][G-5] [Eubacterium]_saphenum
- Parvimonas micra
- Leptotrichia sp._HMT_417
- Leptotrichia shahii
- Fusobacterium nucleatum
- Campylobacter concisus
- Prevotella denticola
- Prevotella intermedia
- Granulicatella adiacens
- Rothia aeria
- Prevotella sp._HMT_313
- Alloprevotella tanneriae
- Prevotella melaninogenica
- Pinus sylvestris
- Fusobacterium periodonticum
- Prevotella histicola
- Fusobacterium nucleatum_subsp._vincentii
- Peptostreptococcaceae_[X1][G-1] [Eubacterium]_sulci
- Corynebacterium matruchotii
- Porphyromonas sp._HMT_930
- Leptotrichia sp._HMT_498
- Oribacterium sinus
- Schaalia sp._HMT_172
- Solobacterium moorei
- Rothia mucilaginosa
- Anaeroglobus geminatus
- Leptotrichia hongkongensis
- Lachnospiraceae_[G-2] bacterium_HMT_096
- Streptococcus sanguinis
- Prevotella oris
- Leptotrichia wadei
- Streptococcus anginosus
- Prevotella nanceiensis
- Veillonella dispar
- Lautropia mirabilis
- Stomatobaculum sp._HMT_097
- Alloprevotella rava
- Peptostreptococcus stomatis
- Alloprevotella sp._HMT_473
- Leptotrichia sp._HMT_215
- Leptotrichia sp._HMT_218
- Alloprevotella sp._HMT_308
- Prevotella nigrescens
- Haemophilus parainfluenzae
- Haemophilus parahaemolyticus
- Bergeyella sp._HMT_206
- Rothia dentocariosa
- Actinomyces graevenitzi
- Filifactor alocis
- Granulicatella elegans
- Leptotrichia sp._HMT_221
- Mogibacterium diversum_neglectum_pumilum_vescum
- Atopobium_Lancefieldella parvula_parvulum
- Haemophilus haemolyticus_influenzae_seminalis_sp._HMT_036_sp
- Veillonella atypica_dispar
- Lautropia dentalis_mirabilis
- Schaalia odontolytica_odontolyticus_sp._HMT_180
- Actinomyces naeslundii_oris_sp._HMT_169_sp._HMT_171_sp._HM
- Campylobacter rectus_showae
- Aggregatibacter sp._HMT_513_sp._HMT_898
- Porphyromonas endodontalis_sp._HMT_285
- Aggregatibacter segnis_sp._HMT_458_sp._HMT_512
- Morococcus_Neisseria cerebrosus_flava_macacae_mucosa_sicca
- Streptococcus salivarius_thermophilus_vestibularis
- Haemophilus parahaemolyticus_paraprohaemolyticus_sputorum
- Kingella_Neisseria denitrificans_elongata
- Bifidobacterium dentium_moukalabense
- Prevotella scopos_sp._HMT_314
- Streptococcus cristatus_downii_gordonii_gwangjuense_infantis_inf
- Streptococcus gordonii_himalayensis_sp._HMT_056
- Lachnoanaerobaculum gingivalis_umeaense
- Streptococcus australis_lactarius_parasanguinis_parasanguinis_cl
- Streptococcus australis_parasanguinis_parasanguinis_clade_411_p
- Neisseria cinerea_flavescens_perflava_subflava
- Porphyromonas pasteri_sp._HMT_278
- Porphyromonas catoniae_pasteri_sp._HMT_278
- Parvimonas_Peptostreptococcus Candidatus massiliensis_micra_sp
- Streptococcus cristatus_cristatus_clade_578_cristatus_clade_886
- Fusobacterium canifelinum_nucleatum_nucleatum_subsp._polymorp
- Fusobacterium naviforme_nucleatum_nucleatum_subsp._vincentii
- Fusobacterium nucleatum_nucleatum_subsp._animalis
- Veillonella parvula_rogosae_tobetsuensis
- Streptococcus hongkongensis_porcinus_salivarius_thermophilus_ut
- Fusobacterium hwasookii_sp._HMT_370
- Prevotella sp._HMT_306_vespertina
- Prevotella jejuni_sp._HMT_313
- Selenomonas sp._HMT_442_sputigena
- Moraxella bovoculi_equi_lacunata_sp._HMT_276
- Prevotella melaninogenica_scopos_sp._HMT_314
- Gemella haemolysans_morbilorum_sanguinis_sp._MOT-043

Species

Samples