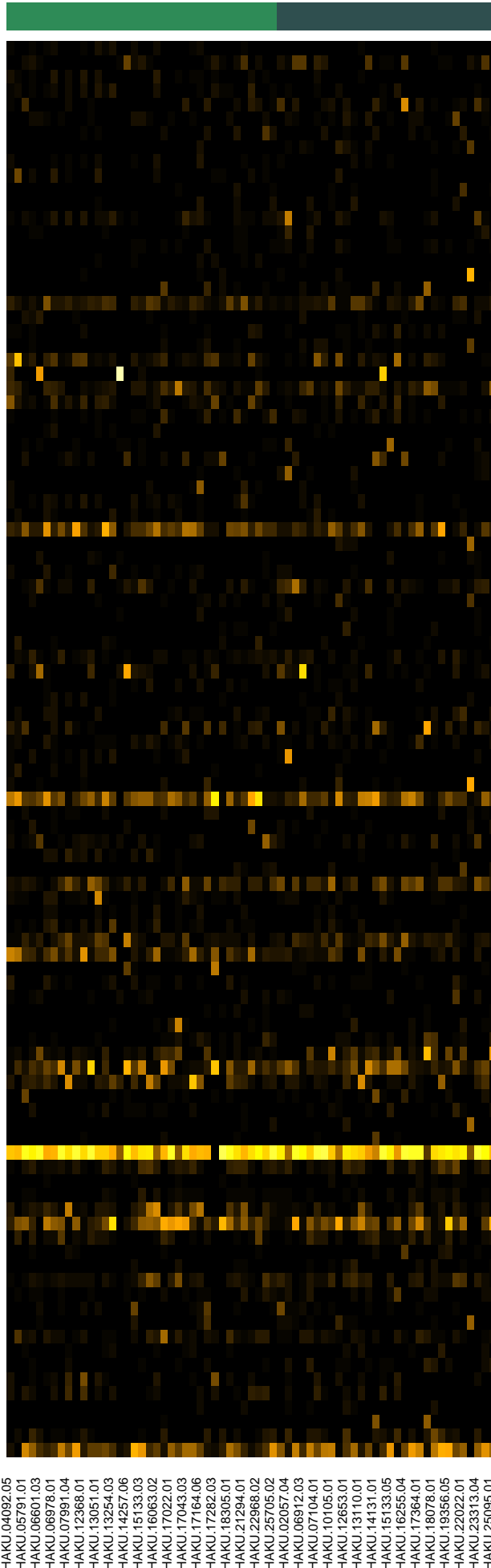


DRPART.SEX  
 Male  
 Female



- Lachnoanaerobaculum orale
- Neisseria oralis
- Megasphaera micronuciformis
- Prevotella salivae
- Veillonella sp.\_HMT\_780
- Abiotrophia defectiva
- Porphyromonas gingivalis
- Dialister invisus
- Stomatobaculum longum
- Prevotella pallens
- Peptostreptococcaceae\_[X1][G-5] [Eubacterium]\_saphenum
- Parvimonas micra
- Leptotrichia sp.\_HMT\_417
- Leptotrichia shahii
- Fusobacterium nucleatum
- Campylobacter concisus
- Prevotella denticola
- Prevotella intermedia
- Granulicatella adiacens
- Rothia aeria
- Prevotella sp.\_HMT\_313
- Alloprevotella tanneriae
- Prevotella melaninogenica
- Pinus sylvestris
- Fusobacterium periodonticum
- Prevotella histicola
- Fusobacterium nucleatum\_subsp.\_vincentii
- Peptostreptococcaceae\_[X1][G-1] [Eubacterium]\_sulci
- Corynebacterium matruchotii
- Porphyromonas sp.\_HMT\_930
- Leptotrichia sp.\_HMT\_498
- Oribacterium sinus
- Schaalia sp.\_HMT\_172
- Solobacterium moorei
- Rothia mucilaginosa
- Anaeroglobus geminatus
- Leptotrichia hongkongensis
- Lachnospiraceae\_[G-2] bacterium\_HMT\_096
- Streptococcus sanguinis
- Prevotella oris
- Leptotrichia wadei
- Streptococcus anginosus
- Prevotella nanceiensis
- Veillonella dispar
- Lautropia mirabilis
- Stomatobaculum sp.\_HMT\_097
- Alloprevotella rava
- Peptostreptococcus stomatis
- Alloprevotella sp.\_HMT\_473
- Leptotrichia sp.\_HMT\_215
- Leptotrichia sp.\_HMT\_218
- Alloprevotella sp.\_HMT\_308
- Prevotella nigrescens
- Haemophilus parainfluenzae
- Haemophilus parahaemolyticus
- Bergeyella sp.\_HMT\_206
- Rothia dentocariosa
- Actinomyces graevenitzi
- Filifactor alocis
- Granulicatella elegans
- Leptotrichia sp.\_HMT\_221
- Mogibacterium diversum\_neglectum\_pumilum\_vescum
- Atopobium\_Lancefieldella parvula\_parvulum
- Haemophilus haemolyticus\_influenzae\_seminalis\_sp.\_HMT\_036\_sp
- Veillonella atypica\_dispar
- Lautropia dentalis\_mirabilis
- Schaalia odontolytica\_odontolyticus\_sp.\_HMT\_180
- Actinomyces naeslundii\_oris\_sp.\_HMT\_169\_sp.\_HMT\_171\_sp.\_HM
- Campylobacter rectus\_showae
- Aggregatibacter sp.\_HMT\_513\_sp.\_HMT\_898
- Porphyromonas endodontalis\_sp.\_HMT\_285
- Aggregatibacter segnis\_sp.\_HMT\_458\_sp.\_HMT\_512
- Morococcus\_Neisseria cerebrosus\_flava\_macacae\_mucosa\_sicca
- Streptococcus salivarius\_thermophilus\_vestibularis
- Haemophilus parahaemolyticus\_paraprohaemolyticus\_sputorum
- Kingella\_Neisseria denitrificans\_elongata
- Bifidobacterium dentium\_moukalabense
- Prevotella scopos\_sp.\_HMT\_314
- Streptococcus cristatus\_downii\_gordonii\_gwangjuense\_infantis\_inf
- Streptococcus gordonii\_himalayensis\_sp.\_HMT\_056
- Lachnoanaerobaculum gingivalis\_umeaense
- Streptococcus australis\_lactarius\_parasanguinis\_parasanguinis\_cl
- Streptococcus australis\_parasanguinis\_parasanguinis\_clade\_411\_p
- Neisseria cinerea\_flavescens\_perflava\_subflava
- Porphyromonas pasteri\_sp.\_HMT\_278
- Porphyromonas catoniae\_pasteri\_sp.\_HMT\_278
- Parvimonas\_Peptostreptococcus Candidatus massiliensis\_micra\_sp
- Streptococcus cristatus\_cristatus\_clade\_578\_cristatus\_clade\_886
- Fusobacterium canifelinum\_nucleatum\_nucleatum\_subsp.\_polymorp
- Fusobacterium naviforme\_nucleatum\_nucleatum\_subsp.\_vincentii
- Fusobacterium nucleatum\_nucleatum\_subsp.\_animalis
- Veillonella parvula\_rogosae\_tobetsuensis
- Streptococcus hongkongensis\_porcinus\_salivarius\_thermophilus\_ut
- Fusobacterium hwasookii\_sp.\_HMT\_370
- Prevotella sp.\_HMT\_306\_vespertina
- Prevotella jejuni\_sp.\_HMT\_313
- Selenomonas sp.\_HMT\_442\_sputigena
- Moraxella bovoculi\_equi\_lacunata\_sp.\_HMT\_276
- Prevotella melaninogenica\_scopos\_sp.\_HMT\_314
- Gemella haemolysans\_morbilorum\_sanguinis\_sp.\_MOT-043

Species

- HAKU\_04082.05
- HAKU\_05791.01
- HAKU\_06601.03
- HAKU\_06978.01
- HAKU\_07991.04
- HAKU\_12368.01
- HAKU\_13051.01
- HAKU\_13254.03
- HAKU\_14257.06
- HAKU\_15133.03
- HAKU\_16063.02
- HAKU\_17022.01
- HAKU\_17043.03
- HAKU\_17164.06
- HAKU\_17282.03
- HAKU\_16305.01
- HAKU\_21294.01
- HAKU\_22968.02
- HAKU\_25705.02
- HAKU\_02057.04
- HAKU\_06912.03
- HAKU\_07104.01
- HAKU\_10105.01
- HAKU\_12653.01
- HAKU\_13110.01
- HAKU\_14131.01
- HAKU\_15133.05
- HAKU\_16255.04
- HAKU\_17384.01
- HAKU\_18078.01
- HAKU\_19356.05
- HAKU\_22022.01
- HAKU\_23313.04
- HAKU\_25095.01

Samples