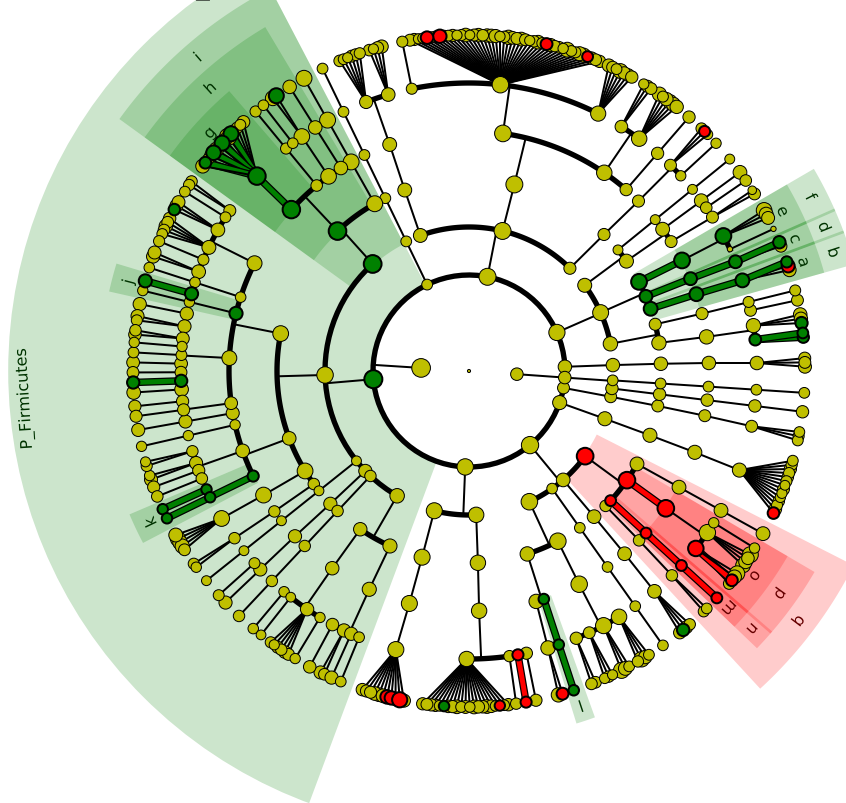


Significantly Represented Taxa

■ ADULT_negative
■ ADULT_positive



- a: F_Actinomycetaceae
- b: O_Actinomycetales
- c: F_Corynebacteriaceae
- d: O_Corynebacteriales
- e: F_Micrococcaceae
- f: O_Micrococcales
- g: F_Streptococcaceae
- h: O_Lactobacillales
- i: C_Bacilli
- j: F_Peptoniphilaceae
- k: F_Peptostreptococcaceae
- l: F_Comamonadaceae
- m: F_Enterobacteriaceae
- n: O_Enterobacterales
- o: F_Pasteurellaceae
- p: O_Pasteurellales
- q: C_Gammaproteobacteri