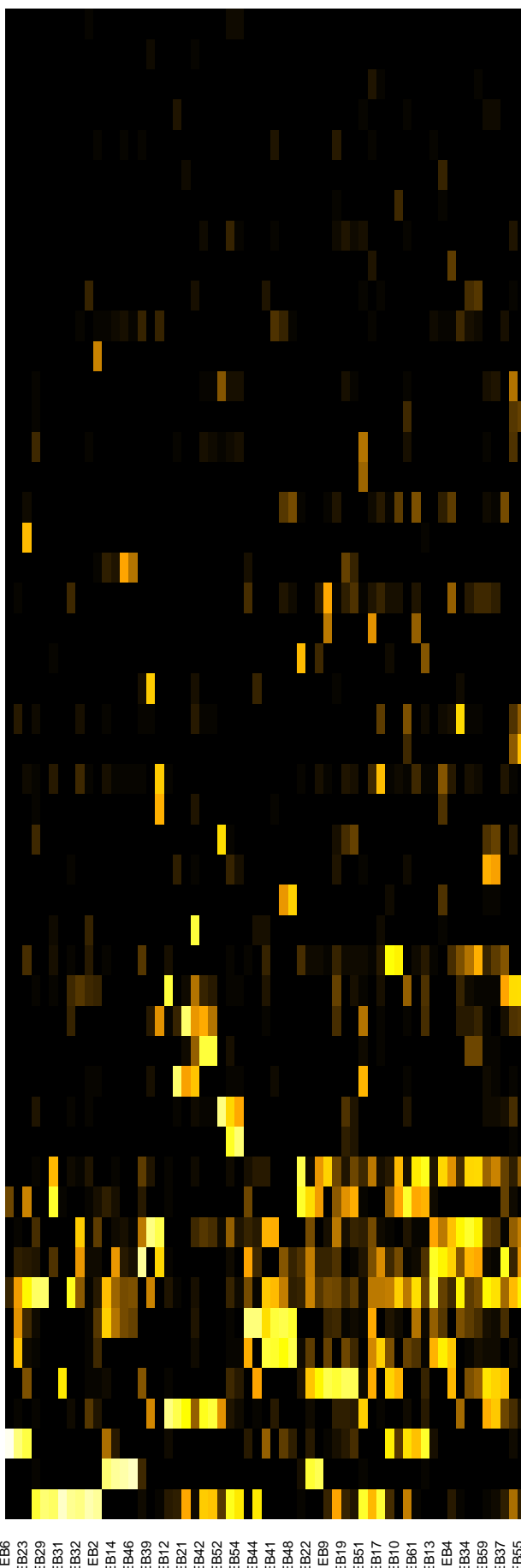
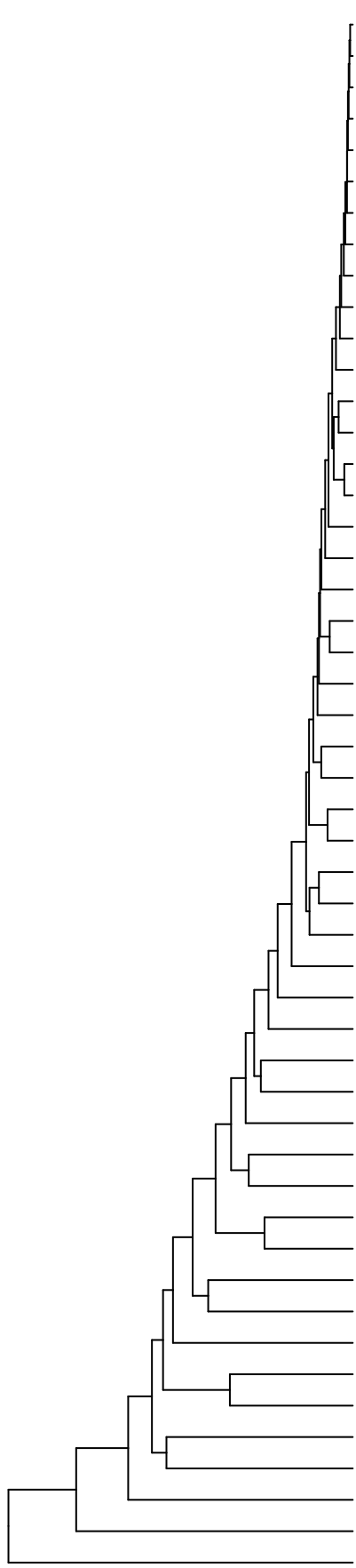


ADJ_PARL
 Yes
 No



- Propionibacteriaceae
- Carnobacteriaceae
- Bacteroidales_[F-2]
- Micrococcaceae
- Spirochaetaceae
- Neisseriaceae
- Lachnospiraceae_[XIVa]
- Phyllobacteriaceae
- Mycoplasmataceae
- Burkholderiaceae
- Spirochaetaceae
- Staphylococcaceae
- Moraxellaceae
- Lactobacillaceae
- Dietziaceae
- Calycanthaceae_Euphorbiaceae
- Bacteroidetes_[F-1]
- Actinomycetales_[F]
- Anaerolineaceae
- Erysipelotrichaceae
- Ruminococcaceae
- Coriobacteriaceae
- Campylobacteraceae
- Veillonellaceae
- Eggerthellaceae
- Lachnospiraceae_[XIV]
- Flavobacteriaceae
- Deinococcaceae
- Caulobacteraceae
- Clostridiales_[F-1]
- Leptotrichiaceae
- Atopobiaceae
- Streptococcaceae
- Actinomycetaceae
- TM7_[F-1]
- Corynebacteriaceae
- Sphingomonadaceae
- Pseudomonadaceae
- Coriobacteriaceae
- Eubacteriaceae_[XV]
- Fusobacteriaceae
- Prevotellaceae
- Peptostreptococcaceae_[XI]
- Porphyromonadaceae
- Synergistaceae
- Peptoniphilaceae
- Micrococcaceae
- Bacteroidaceae
- Dethiosulfovibrionaceae
- Propionibacteriaceae

EB6
EB23
EB29
EB31
EB32
EB2
EB14
EB46
EB39
EB12
EB21
EB42
EB52
EB64
EB44
EB41
EB48
EB22
EB9
EB19
EB51
EB17
EB10
EB61
EB13
EB4
EB34
EB59
EB37
EB55

Family

Samples