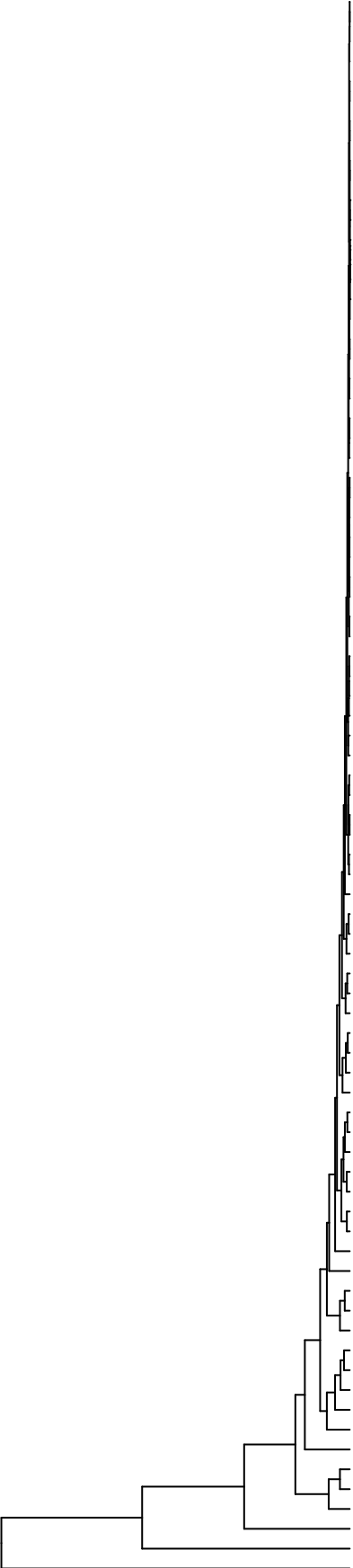


- Alloprevotella sp._oral_taxon_308
- Streptococcus mitis
- Granulicatella adiacens
- Capnocytophaga sp._oral_taxon_864
- Prevotella multiformis
- Capnocytophaga leadbetteri
- Cryptobacterium curtum
- Capnocytophaga sputigena
- Campylobacter gracilis
- Stomatobaculum longum
- Burkholderia cepacia
- Propionibacterium acnes
- Lautropia mirabilis
- Prevotella oralis
- Eikenella sp._oral_taxon_011
- Stomatobaculum sp._oral_taxon_097
- Parvimonas multispecies_sppn3_2_nov_96.868%
- Bacteroidetes_[G-5] sp._oral_taxon_511
- Oribacterium sp._oral_taxon_078
- Fusobacterium sp._oral_taxon_203
- Prevotella sp._oral_taxon_472
- Prevotella oulorum
- Prevotella salivae
- Klebsiella sp._Oral_Taxon_A36
- Peptostreptococcaceae_[XII][G-2] sp._oral_taxon_091
- Streptococcus sp._oral_taxon_056
- Lachnospiraceae_[G-8] sp._oral_taxon_500_nov_97.912%
- Veillonella parvula_group
- Atopobium rimae
- Peptostreptococcaceae_[XII][G-7] [Eubacterium]_yurii_subsp._yurii
- Fusobacterium nucleatum_subsp._polymorphum_sp._HOT_204
- Catonella sp._oral_taxon_164
- Lachnospiraceae_[G-8] sp._oral_taxon_500
- Capnocytophaga sp._oral_taxon_326
- Streptococcus sp._oral_taxon_064
- Streptococcus cristatus
- Streptococcus sanguinis
- Eikenella corrodens
- Capnocytophaga gingivalis
- Bacteroidetes_[G-3] sp._oral_taxon_280
- Bacteroidales_[G-2] sp._oral_taxon_274
- Alloprevotella rava
- Fusobacterium naviforme_nucleatum_subsp._vincentii
- Prevotella sp._oral_taxon_317
- Streptococcus sp._oral_taxon_070
- Peptostreptococcaceae_[XII][G-9] [Eubacterium]_brachy
- Peptostreptococcaceae_[XII][G-7] sp._oral_taxon_081
- Fretibacterium fastidiosum
- Solobacterium moorei
- Porphyromonas sp._oral_taxon_279
- Capnocytophaga sp._oral_taxon_338
- Atopobium parvulum
- Prevotella pallens
- Streptococcus oralis
- Fusobacterium nucleatum_subsp._polymorphum_periodonticum
- Fusobacterium nucleatum_subsp._animalis
- Streptococcus dentisani
- Streptococcus tigurinus
- Alloprevotella tannerae
- Porphyromonas sp._oral_taxon_278
- Campylobacter showae
- Fretibacterium sp._oral_taxon_360
- Catonella morbi
- Parvimonas sp._oral_taxon_110
- Streptococcus sp._oral_taxon_423
- Streptococcus sp._oral_taxon_058
- Prevotella melaninogenica
- Porphyromonas sp._oral_taxon_284
- Porphyromonas endodontalis
- Atopobium sp._oral_taxon_199
- Fusobacterium nucleatum_subsp._vincentii
- Oribacterium sp._oral_taxon_102
- Oribacterium sinus
- Fusobacterium sp._HOT_204
- Parvimonas micra
- Mogibacterium diversum
- Slackia exigua
- Fusobacterium periodonticum
- Campylobacter concisus
- Fusobacterium nucleatum_subsp._polymorphum

Species



Samples