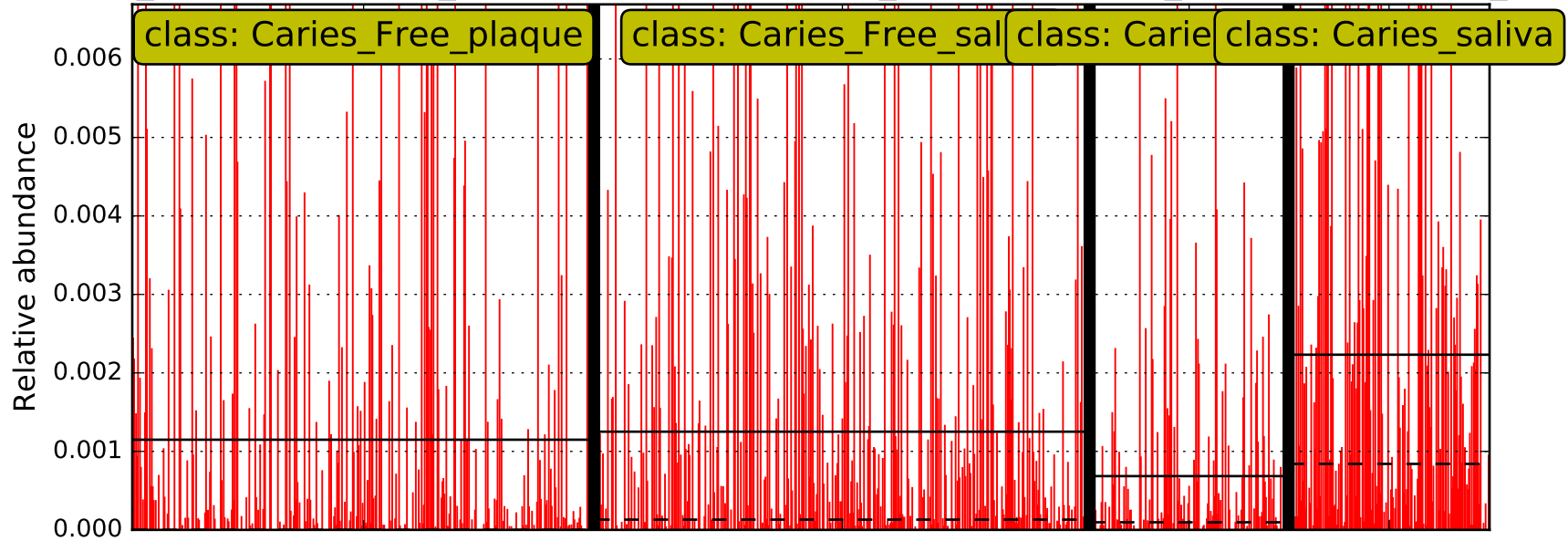


K\_Bacteria.P\_Proteobacteria.C\_Gammaproteobacteria.O\_Pasteurellales.F\_Pasteurellaceae.G\_multigen



class: Caries\_Free\_plaque

class: Caries\_Free\_sal

class: Carie

class: Caries\_saliva

Relative abundance

0.006  
0.005  
0.004  
0.003  
0.002  
0.001  
0.000