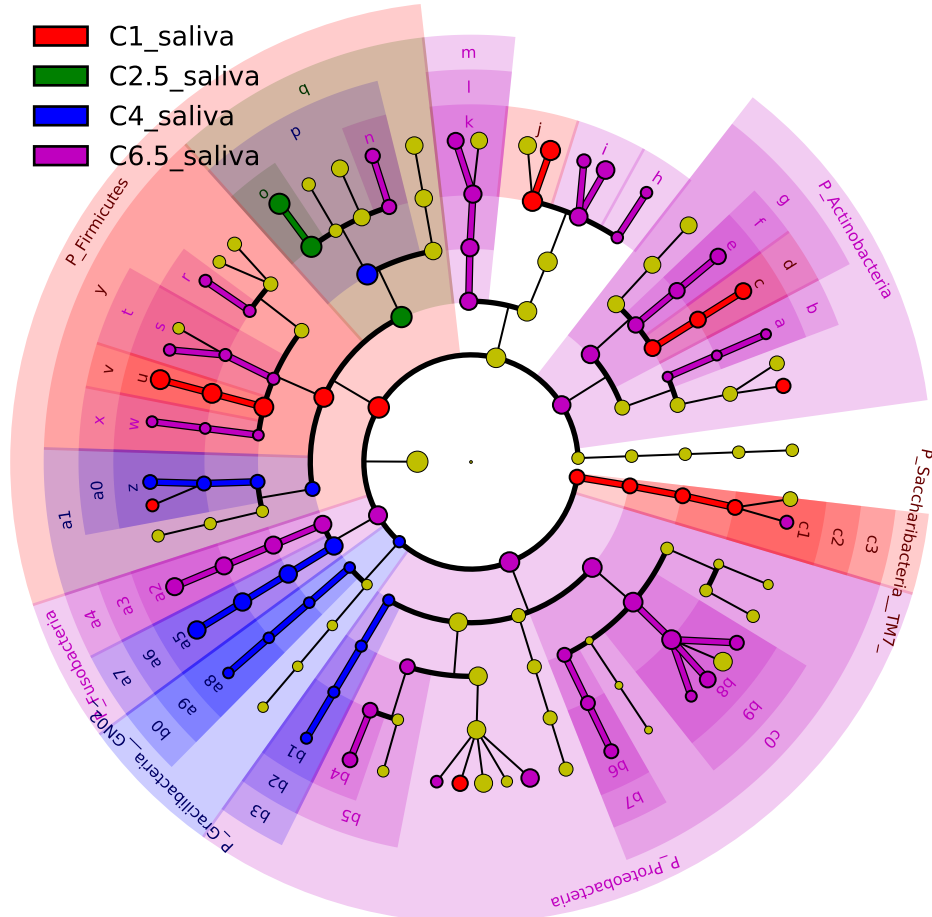


# Significantly Represented Taxa



- C1\_saliva
- C2.5\_saliva
- C4\_saliva
- C6.5\_saliva

- a: F\_Propionibacteriaceae
- b: O\_Propionibacteriales
- c: F\_Actinomycetaceae
- d: O\_Actinomycetales
- e: F\_Corynebacteriaceae
- f: O\_Corynebacteriales
- g: C\_Actinomycetia
- h: F\_Bacteroidales\_F\_2
- i: F\_Porphyrimonadaceae
- j: F\_Prevotellaceae
- k: F\_Flavobacteriaceae
- l: O\_Flavobacteriales
- m: C\_Flavobacteriia
- n: F\_Aerococcaceae
- o: F\_Streptococcaceae
- p: O\_Lactobacillales
- q: C\_Bacilli
- r: F\_Ruminococcaceae
- s: F\_Lachnospiraceae
- t: O\_Eubacteriales
- u: F\_Veillonellaceae
- v: O\_Negativicutes
- w: F\_multifamily
- x: O\_multiorder
- y: C\_Clostridia
- z: F\_Selenomonadaceae
- a0: O\_Selenomonadales
- a1: C\_Negativicutes
- a2: F\_Fusobacteriaceae
- a3: O\_Fusobacteriales
- a4: C\_Fusobacteria
- a5: F\_Leptotrichiaceae
- a6: O\_Fusobacteriales
- a7: C\_Fusobacteriia
- a8: F\_Gracilibacteria\_GN0
- a9: O\_Gracilibacteria\_GN
- b0: C\_Gracilibacteria\_GN0
- b1: F\_Sphingomonadaceae
- b2: O\_Sphingomonadales
- b3: C\_Alphaproteobacteria
- b4: F\_Burkholderiaceae
- b5: O\_Burkholderiales
- b6: F\_Cardiobacteriaceae