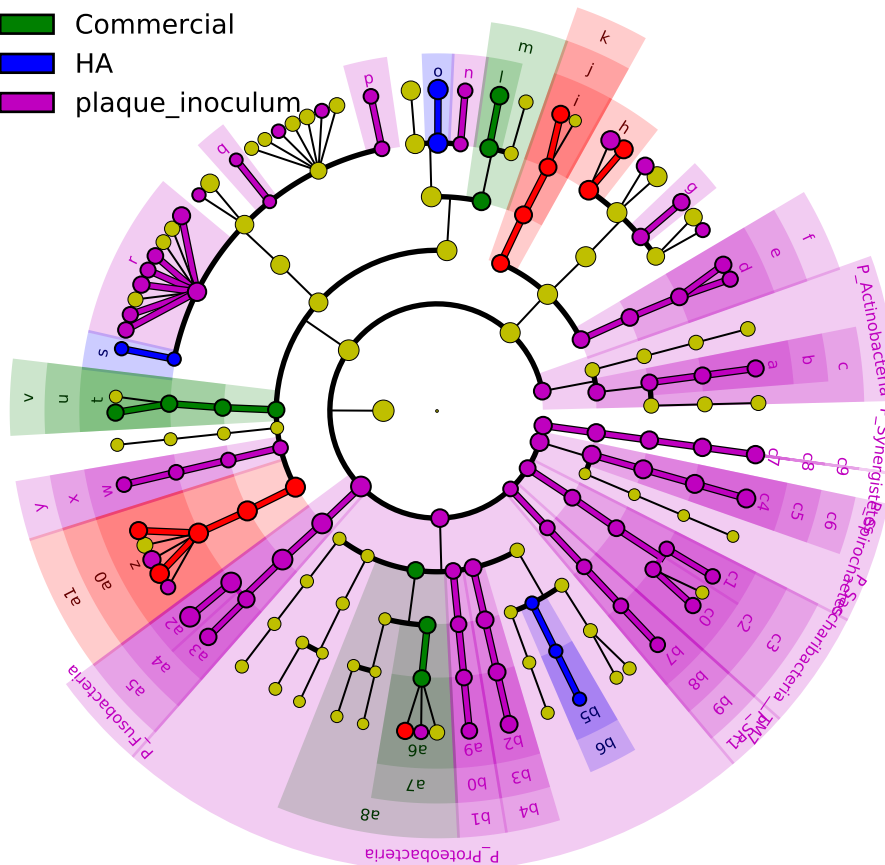


Significantly Represented Taxa

- BTO
- Commercial
- HA
- plaque_inoculum



- a: F_Corynebacteriaceae
- b: O_Corynebacteriales
- c: C_Actinobacteria
- d: F_Bacteroidetes_F_1
- e: O_Bacteroidetes_O_1
- f: C_Bacteroidetes_C_1
- g: F_Bacteroidales_F_2
- h: F_Prevotellaceae
- i: F_Flavobacteriaceae
- j: O_Flavobacteriales
- k: C_Flavobacteriia
- l: F_Gemellaceae
- m: O_Bacillales
- n: F_Aerococcaceae
- o: F_Carnobacteriaceae
- p: F_Clostridiales_F_1
- q: F_Peptococcaceae
- r: F_Peptostreptococcaceae
- s: F_Ruminococcaceae
- t: F_Erysipelotrichaceae
- u: O_Erysipelotrichales
- v: C_Erysipelotrichia
- w: F_Mycoplasmataceae
- x: O_Mycoplasmatales
- y: C_Mollicutes
- z: F_Veillonellaceae
- a0: O_Selenomonadales
- a1: C_Negativicutes
- a2: F_Fusobacteriaceae
- a3: F_Leptotrichiaceae
- a4: O_Fusobacteriales
- a5: C_Fusobacteriia
- a6: F_Neisseriaceae
- a7: O_Neisseriales
- a8: C_Betaproteobacteria
- a9: F_Desulfobulbaceae
- b0: O_Desulfobacteriales
- b1: C_Deltaproteobacteria
- b2: F_Campylobacteraceae
- b3: O_Campylobacteriales
- b4: C_Epsilonproteobacteria
- b5: F_Pasteurellaceae
- b6: O_Pasteurellales