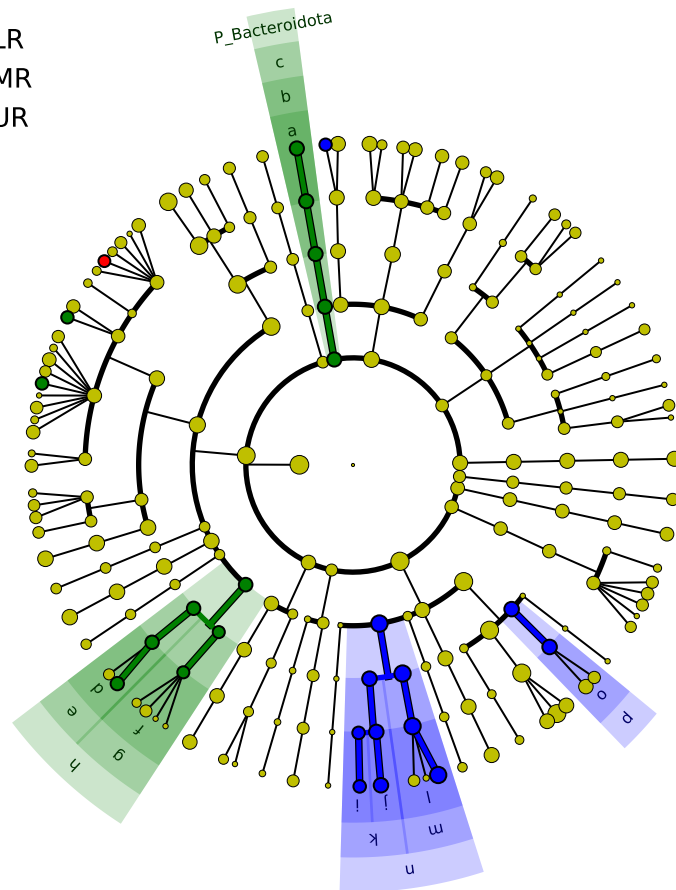


Significantly Represented Taxa

■ LR
■ MR
■ UR



a: F_Bacteroidaceae
 b: O_Bacteroidales
 c: C_Bacteroidia
 d: F_Selenomonadaceae
 e: O_Selenomonadales
 f: F_Veillonellaceae
 g: O_Veillonellales
 h: C_Negativicutes
 i: F_Burkholderiaceae
 j: F_Comamonadaceae
 k: O_Burkholderiales
 l: F_Neisseriaceae
 m: O_Neisseriales
 n: C_Betaproteobacteria
 o: F_Pasteurellaceae
 p: O_Pasteurellales