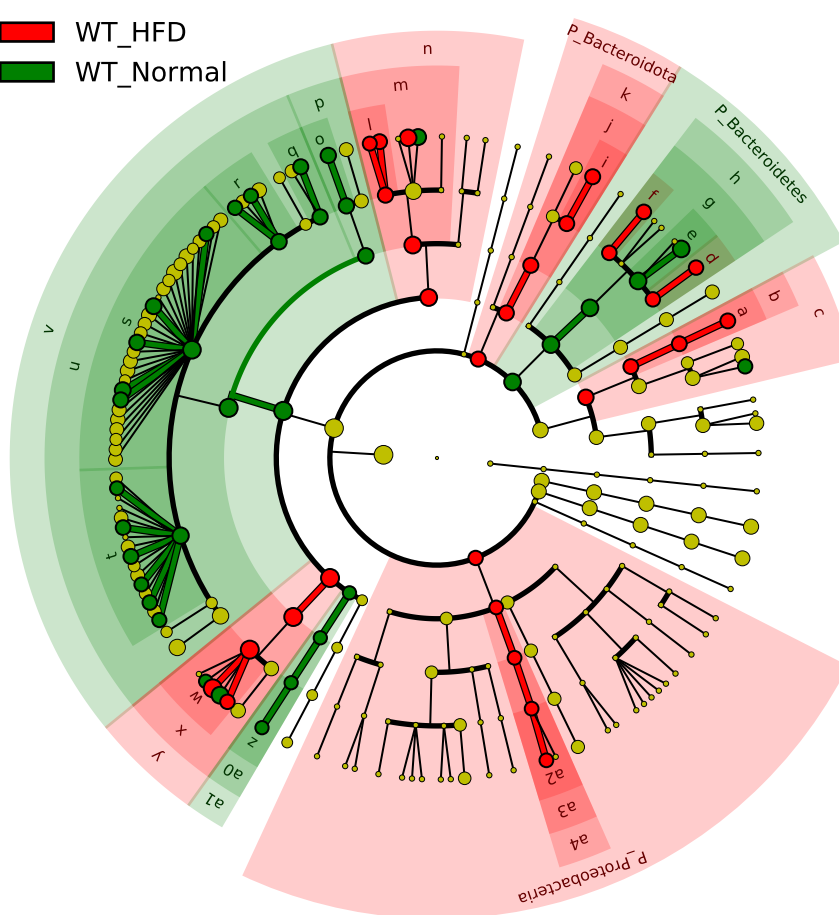


# Significantly Represented Taxa

WT\_HFD  
WT\_Normal



a: F\_Eggerthellaceae  
b: O\_Eggerthellales  
c: C\_Coriobacteriia  
d: F\_Bacteroidaceae  
e: F\_Muribaculaceae  
f: F\_Tannerellaceae  
g: O\_Bacteroidales  
h: C\_Bacteroidia  
i: F\_Bacteroidaceae  
j: O\_Bacteroidales  
k: C\_Bacteroidia  
l: F\_Streptococcaceae  
m: O\_Lactobacillales  
n: C\_Bacilli  
o: F\_Eubacteriaceae\_XV\_  
p: O\_Clostridiales  
q: F\_Clostridiaceae  
r: F\_Eubacteriales\_F\_1\_  
s: F\_Lachnospiraceae  
t: F\_Oscillospiraceae  
u: O\_Eubacteriales  
v: C\_Clostridia  
w: F\_Erysipelotrichaceae  
x: O\_Erysipelotrichales  
y: C\_Erysipelotrichia  
z: F\_Mollicutes\_F\_2\_  
a0: O\_Mollicutes\_O\_2\_  
a1: C\_Mollicutes  
a2: F\_Desulfovibrionaceae  
a3: O\_Desulfovibrionales  
a4: C\_Deltaproteobacteria