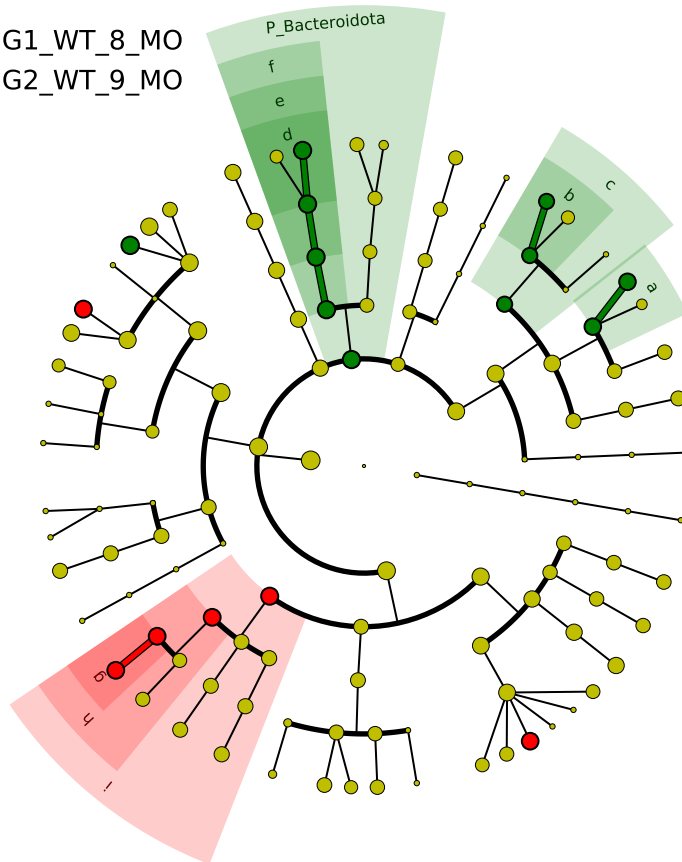


Significantly Represented Taxa

G1_WT_8_MO

G2_WT_9_MO



- a: F_Nocardiaceae
- b: F_Microbacteriaceae
- c: O_Micrococcales
- d: F_Weeksellaceae
- e: O_Flavobacteriales
- f: C_Flavobacteriia
- g: F_Bradyrhizobiaceae
- h: O_Rhizobiales
- i: C_Alphaproteobacteria