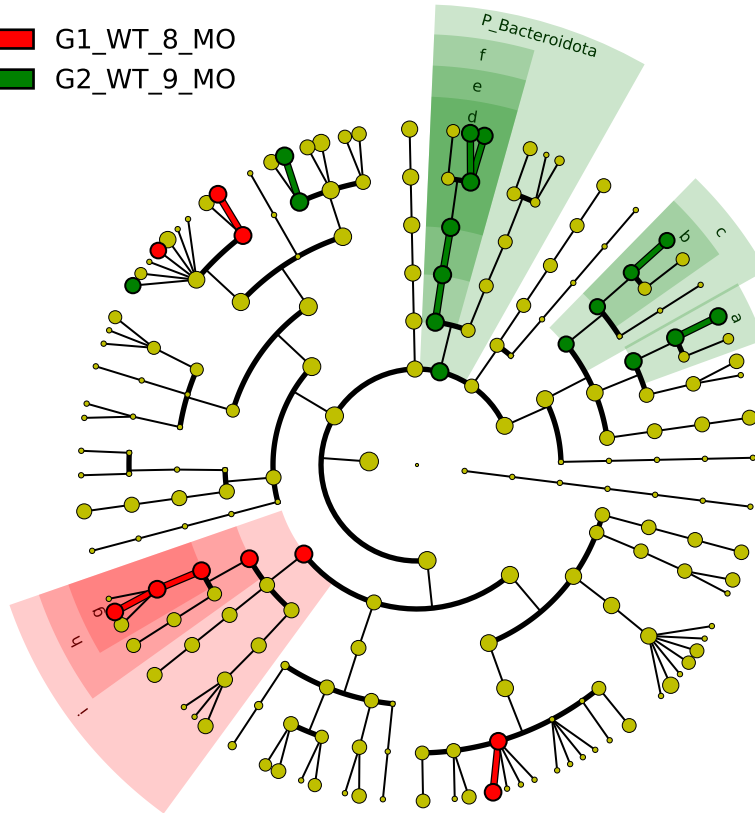


Significantly Represented Taxa

■ G1_WT_8_MO
■ G2_WT_9_MO



■ a: F_Nocardiaceae
■ b: F_Microbacteriaceae
■ c: O_Micrococcales
■ d: F_Weeksellaceae
■ e: O_Flavobacteriales
■ f: C_Flavobacteriia
■ g: F_Bradyrhizobiaceae
■ h: O_Rhizobiales
■ i: C_Alphaproteobacteria