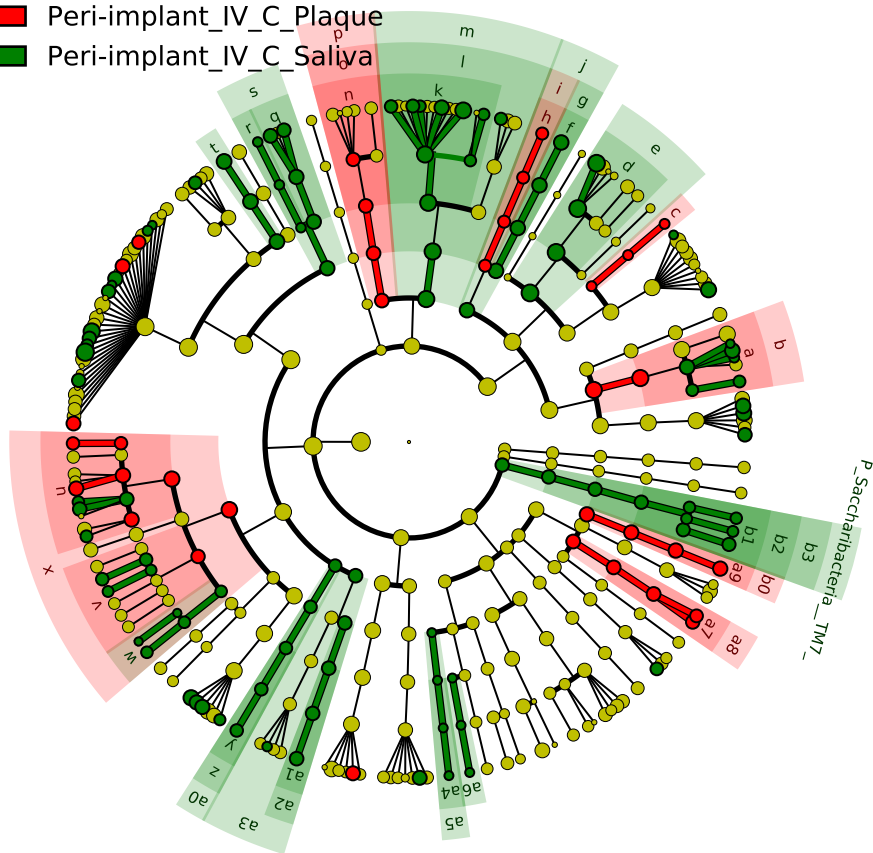


Significantly Represented Taxa

Peri-implant_IV_C_Plaque

Peri-implant_IV_C_Saliya



- a: F_Bifidobacteriaceae
- b: O_Bifidobacteriales
- c: F_Propionibacteriaceae
- d: F_Micrococcaceae
- e: O_Micrococcales
- f: F_Attopobiaceae
- g: O_Coriobacteriales
- h: F_Eggerthellaceae
- i: O_Eggerthellales
- j: C_Coriobacteriia
- k: F_Prevotellaceae
- l: O_Bacteroidales
- m: C_Bacteroidia
- n: F_Flavobacteriaceae
- o: O_Flavobacteriales
- p: C_Flavobacteriia
- q: F_Gemellaceae
- r: F_Staphylococcaceae
- s: O_Bacillales
- t: F_Carnobacteriaceae
- u: F_Lachnospiraceae_XIV
- v: F_Peptostreptococcaceae
- w: F_Ruminococcaceae
- x: O_Clostridiales
- y: F_Erysipelotrichaceae
- z: O_Erysipelotrichales
- a0: C_Erysipelotrichia
- a1: F_Veillonellaceae
- a2: O_Veillonellales
- a3: C_Negativicutes
- a4: F_Reyranellaceae
- a5: O_Hyphomicrobiales
- a6: F_Bradyrhizobiaceae
- a7: F_Moraxellaceae
- a8: O_Moraxellales
- a9: F_Moraxellaceae
- b0: O_Pseudomonadales
- b1: F_Saccharibacteria_TM7
- b2: O_Saccharibacteria_TM7
- b3: C_Saccharibacteria_TM7