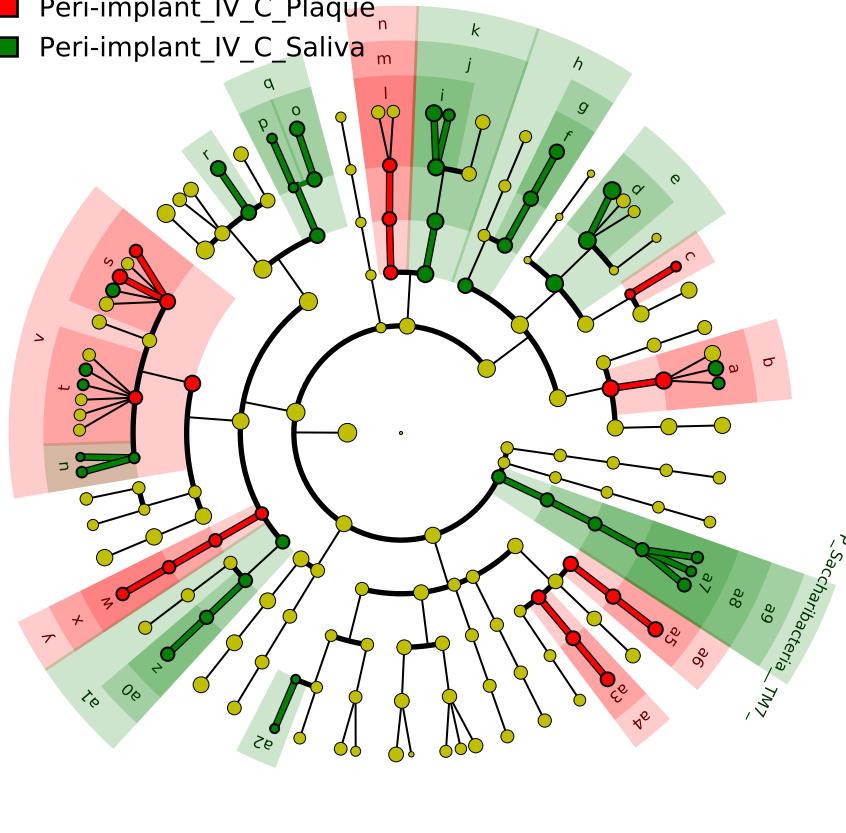


# Significantly Represented Taxa

■ Peri-implant\_IV\_C\_Plaque  
■ Peri-implant\_IV\_C\_Saliva



- a: F\_Bifidobacteriaceae
- b: O\_Bifidobacteriales
- c: F\_Propionibacteriaceae
- d: F\_Micrococcaceae
- e: O\_Micrococcales
- f: F\_Attopobiaceae
- g: O\_Coriobacteriales
- h: C\_Coriobacteriia
- i: F\_Prevotellaceae
- j: O\_Bacteroidales
- k: C\_Bacteroidia
- l: F\_Flavobacteriaceae
- m: O\_Flavobacteriales
- n: C\_Flavobacteriia
- o: F\_Gemellaceae
- p: F\_Staphylococcaceae
- q: O\_Bacillales
- r: F\_Carnobacteriaceae
- s: F\_Lachnospiraceae\_XIV
- t: F\_Peptostreptococcaceae
- u: F\_Ruminococcaceae
- v: O\_Clostridiales
- w: F\_Erysipelotrichaceae
- x: O\_Erysipelotrichales
- y: C\_Erysipelotrichia
- z: F\_Veillonellaceae
- a0: O\_Veillonellales
- a1: C\_Negativicutes
- a2: F\_Bradyrhizobiaceae
- a3: F\_Moraxellaceae
- a4: O\_Moraxellales
- a5: F\_Moraxellaceae
- a6: O\_Pseudomonadales
- a7: F\_Saccharibacteria\_TM7
- a8: O\_Saccharibacteria\_TM7
- a9: C\_Saccharibacteria\_TM7