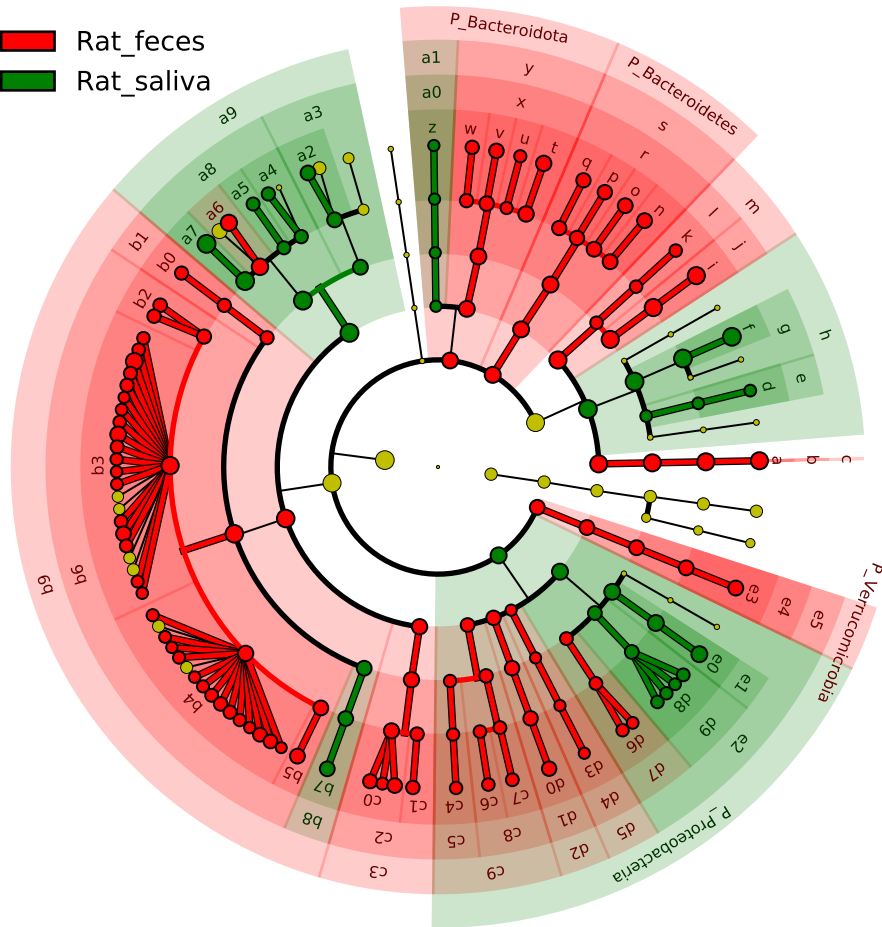


# Significantly Represented Taxa

Rat\_feces

Rat\_saliva



- a: F\_Bifidobacteriaceae
- b: O\_Bifidobacteriales
- c: C\_Actinobacteria
- d: F\_Corynebacteriaceae
- e: O\_Corynebacteriales
- f: F\_Micrococcaceae
- g: O\_Micrococcales
- h: C\_Actinomycetia
- i: F\_Coriobacteriaceae
- j: O\_Coriobacteriales
- k: F\_Eggerthellaceae
- l: O\_Eggerthellales
- m: C\_Coriobacteriia
- n: F\_Bacteroidaceae
- o: F\_Muribaculaceae
- p: F\_Rikenellaceae
- q: F\_Tannerellaceae
- r: O\_Bacteroidales
- s: C\_Bacteroidia
- t: F\_Bacteroidaceae
- u: F\_Barnesiellaceae
- v: F\_Muribaculaceae
- w: F\_Odoribacteraceae
- x: O\_Bacteroidales
- y: C\_Bacteroidia
- z: F\_Weeksellaceae
- a0: O\_Flavobacteriales
- a1: C\_Flavobacteriia
- a2: F\_Staphylococcaceae
- a3: O\_Bacillales
- a4: F\_Carnobacteriaceae
- a5: F\_Enterococcaceae
- a6: F\_Lactobacillaceae
- a7: F\_Streptococcaceae
- a8: O\_Lactobacillales
- a9: C\_Bacilli
- b0: F\_Eubacteriaceae\_XV
- b1: O\_Clostridiales
- b2: F\_Clostridiaceae
- b3: F\_Lachnospiraceae
- b4: F\_Oscillospiraceae
- b5: F\_Peptostreptococcaceae
- b6: O\_Eubacteriales