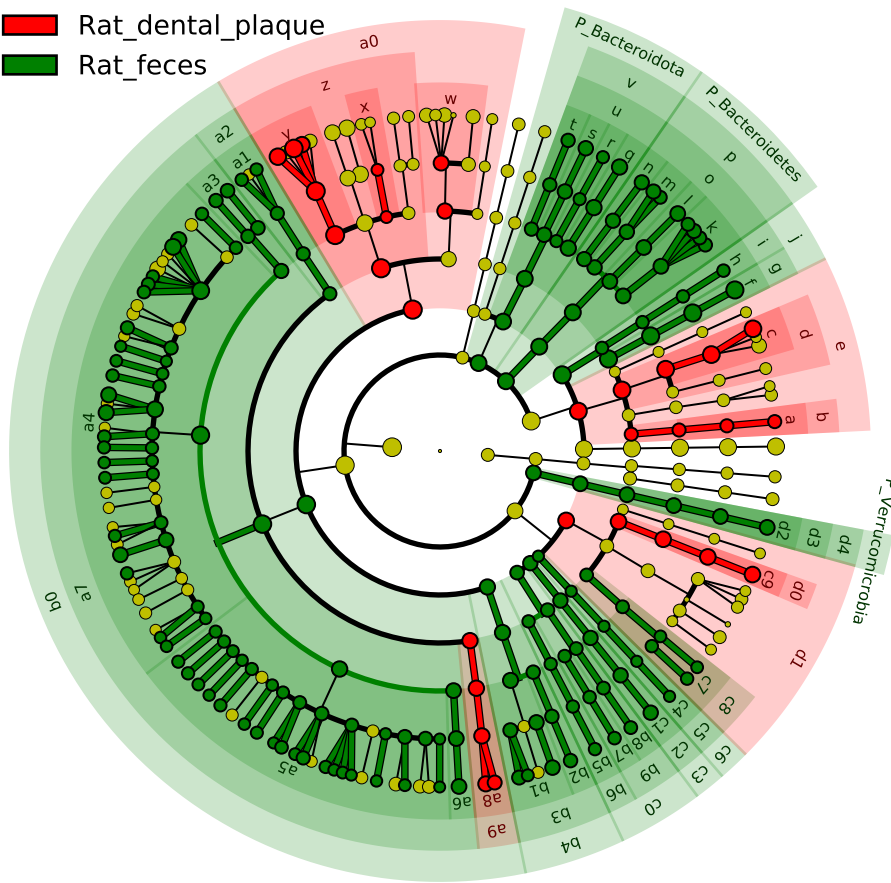


# Significantly Represented Taxa

■ Rat\_dental\_plaque  
■ Rat\_feces



- a: F\_Propionibacteriaceae
- b: O\_Actinomycetales
- c: F\_Micrococcaceae
- d: O\_Micrococcales
- e: C\_Actinomycetia
- f: F\_Coriobacteriaceae
- g: O\_Coriobacteriales
- h: F\_Eggerthellaceae
- i: O\_Eggerthellales
- j: C\_Coriobacteria
- k: F\_Bacteroidaceae
- l: F\_Muribaculaceae
- m: F\_Rikenellaceae
- n: F\_Tannerellaceae
- o: O\_Bacteroidales
- p: C\_Bacteroidia
- q: F\_Bacteroidaceae
- r: F\_Barnesiellaceae
- s: F\_Muribaculaceae
- t: F\_Odoribacteraceae
- u: O\_Bacteroidales
- v: C\_Bacteroidia
- w: F\_Staphylococcaceae
- x: F\_Enterococcaceae
- y: F\_Streptococcaceae
- z: O\_Lactobacillales
- a0: C\_Bacilli
- a1: F\_Eubacteriaceae\_XV
- a2: O\_Clostridiales
- a3: F\_Clostridiaceae
- a4: F\_Lachnospiraceae
- a5: F\_Oscillospiraceae
- a6: F\_Peptostreptococcaceae
- a7: O\_Eubacteriales
- a8: F\_Veillonellaceae
- a9: O\_Negativicutes
- b0: C\_Clostridia
- b1: F\_Erysipelotrichaceae
- b2: F\_Turicibacteraceae
- b3: O\_Erysipelotrichales
- b4: C\_Erysipelotrichia
- b5: F\_Kordiimonadaceae
- b6: O\_Kordiimonadales