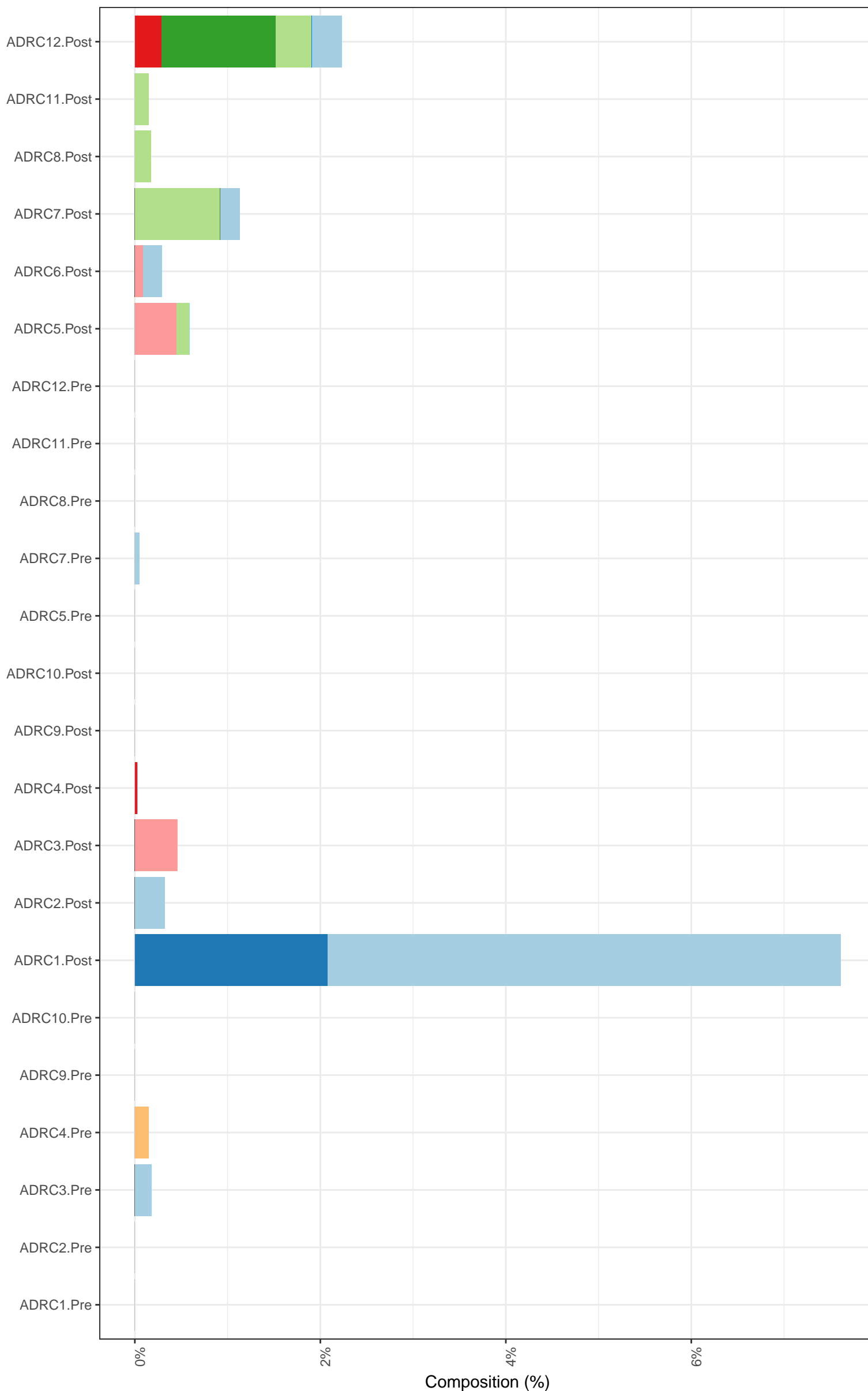


Composition Barchart



Strains

- seq44. *Bifidobacteriaceae.Bifidobacterium.pseudolongum*
- seq101. *Bifidobacteriaceae.Bifidobacterium.pseudolongum*
- seq108. *Bifidobacteriaceae.Bifidobacterium.pseudolongum*
- seq130. *Bifidobacteriaceae.Bifidobacterium.pseudolongum*
- seq143. *Bifidobacteriaceae.Bifidobacterium.pseudolongum*
- seq296. *Bifidobacteriaceae.Bifidobacterium.pseudolongum*
- seq419. *Bifidobacteriaceae.Bifidobacterium.breve*