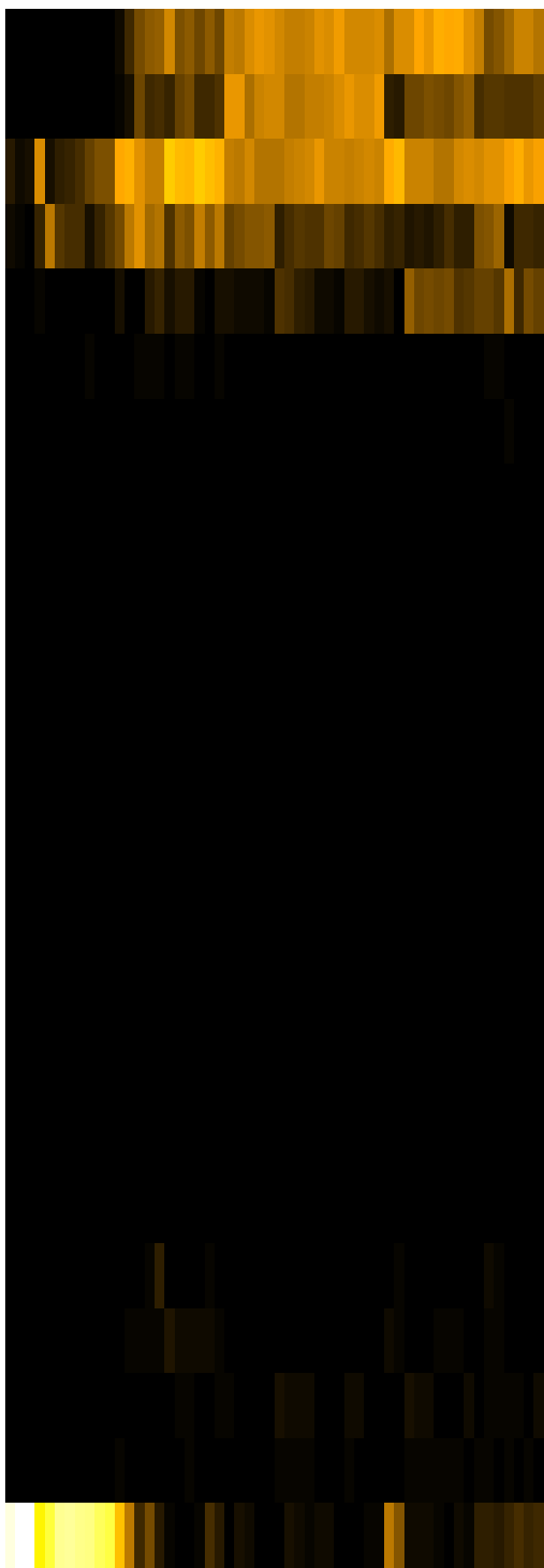
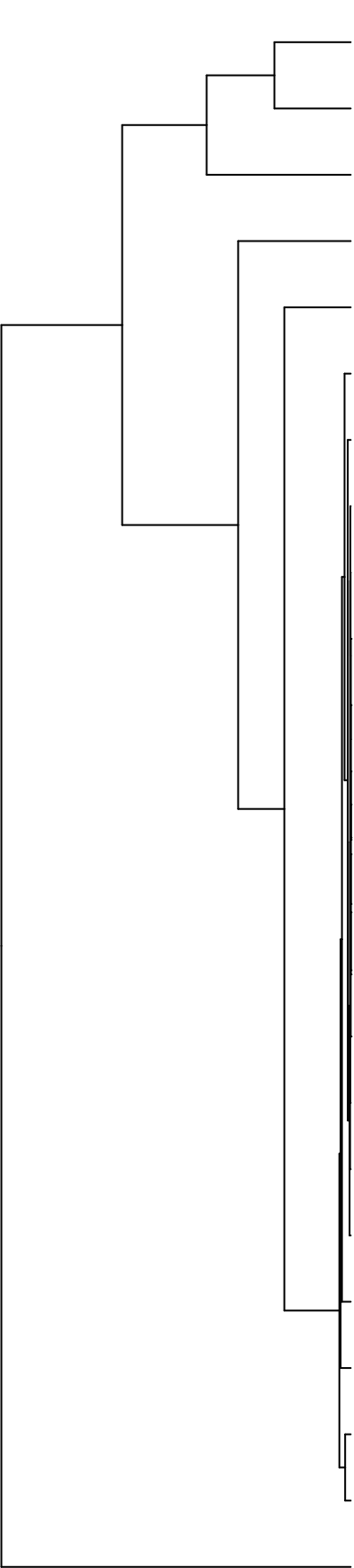


Group006
 I Final -PMA
 F Final -PMA



Veillonellales
 Pasteurellales
 Lactobacillales
 Neisseriales
 Fusobacteriales
 Bacillales
 Eubacteriales
 Saccharibacteria_(TM7)_[O-1]
 Coriobacteriales
 Propionibacteriales
 Flavobacteriales
 Hyphomicrobiales
 Sphingomonadales
 Absconditabacteria_(SR1)_[O-1]
 Cytophagales
 Corynebacteriales
 Burkholderiales
 Erysipelotrichales
 Pseudomonadales
 Micrococcales
 Actinomycetales
 Bacteroidales
 Campylobacteriales
 Enterobacteriales

F28914_S464
 F28914_S459
 F28914_S461
 F28914_S463
 F28914_S467
 F28914_S605
 F28914_S297
 F28914_S139
 F28914_S304
 F28914_S144
 F28914_S303
 F28914_S118
 F28914_S280
 F28914_S279
 F28914_S115
 F28914_S113
 F28914_S274
 F28914_S120
 F28914_S278
 F28914_S302
 F28914_S439
 F28914_S434
 F28914_S594
 F28914_S435
 F28914_S140
 F28914_S440
 F28914_S437

Samples

Order