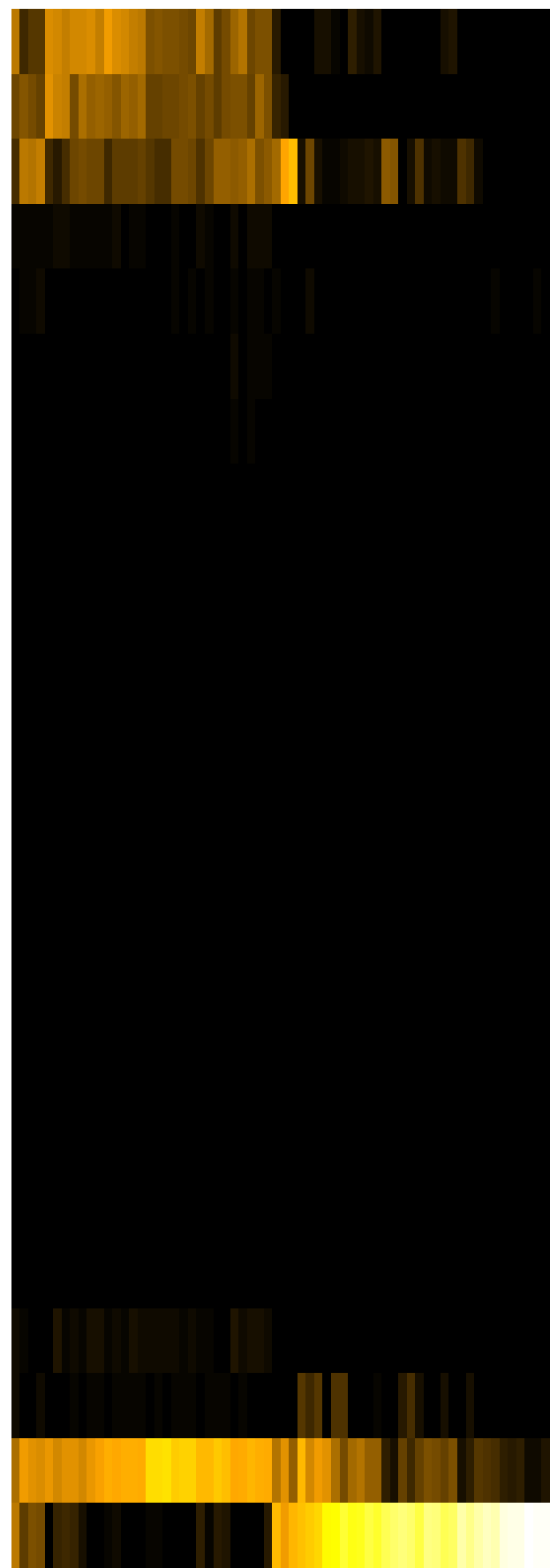
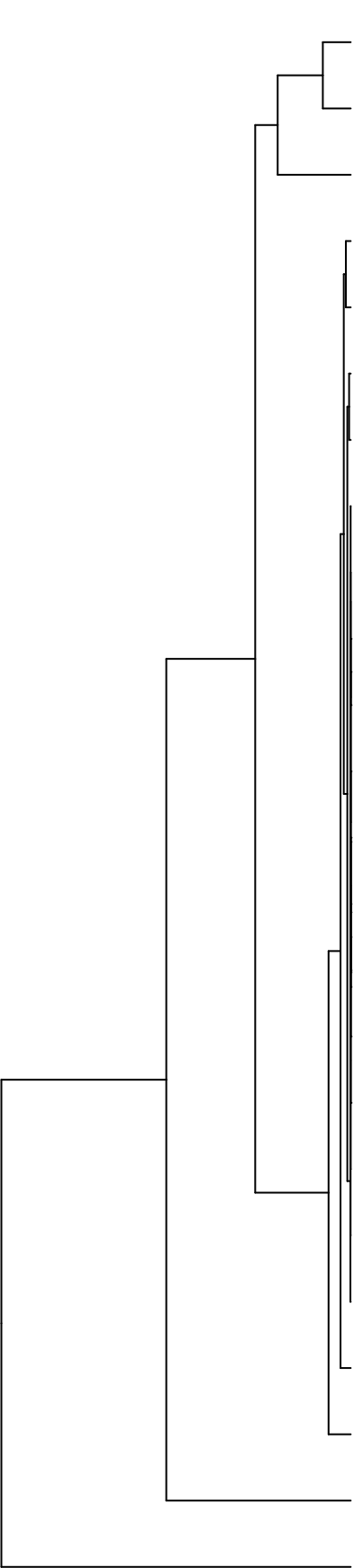


Group006  
■ B Final -PMA  
■ C Final -PMA



Veillonellales  
 Pasteurellales  
 Neisseriales  
 Actinomycetales  
 Bacillales  
 Bacteroidales  
 Campylobacteriales  
 Burkholderiales  
 Coriobacteriales  
 Propionibacteriales  
 Pseudomonadales  
 Hyphomicrobiales  
 Flavobacteriales  
 Cytophagales  
 Sphingomonadales  
 Corynebacteriales  
 Absconditabacteria\_(SR1)\_[O-1]  
 Saccharibacteria\_(TM7)\_[O-1]  
 Erysipelotrichales  
 Eubacteriales  
 Fusobacteriales  
 Micrococcales  
 Lactobacillales  
 Enterobacteriales

F28914.S243  
 F28914.S085  
 F28914.S245  
 F28914.S242  
 F28914.S241  
 F28914.S250  
 F28914.S246  
 F28914.S255  
 F28914.S096  
 F28914.S094  
 F28914.S093  
 F28914.S247  
 F28914.S091  
 F28914.S086  
 F28914.S087  
 F28914.S088  
 F28914.S567  
 F28914.S575  
 F28914.S416  
 F28914.S574  
 F28914.S414  
 F28914.S412  
 F28914.S564  
 F28914.S573  
 F28914.S570  
 F28914.S408  
 F28914.S410  
 F28914.S561  
 F28914.S406  
 F28914.S404  
 F28914.S405

Samples

Order