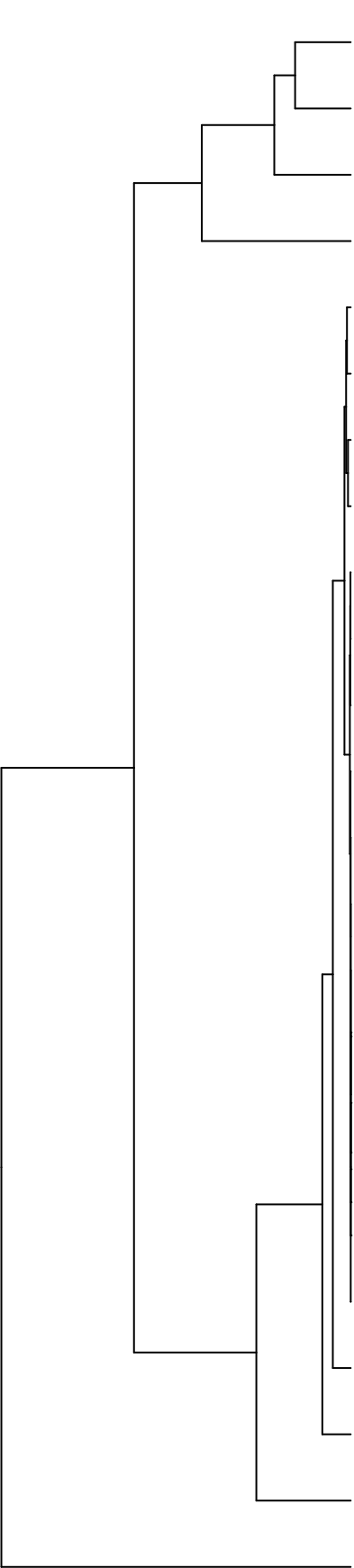


Group006
 D Final -PMA
 C Final -PMA



Veillonellales
 Pasteurellales
 Neisseriales
 Lactobacillales
 Actinomycetales
 Bacillales
 Bacteroidales
 Campylobacteriales
 Erysipelotrichales
 Coriobacteriales
 Eubacteriales
 Saccharibacteria_(TM7)_[O-1]
 Burkholderiales
 Absconditabacteria_(SR1)_[O-1]
 Flavobacteriales
 Hyphomicrobiales
 Corynebacteriales
 Cytophagales
 Sphingomonadales
 Propionibacteriales
 Fusobacteriales
 Micrococcales
 Pseudomonadales
 Enterobacteriales

F28914.S583
 F28914.S576
 F28914.S578
 F28914.S584
 F28914.S415
 F28914.S572
 F28914.S411
 F28914.S409
 F28914.S582
 F28914.S421
 F28914.S419
 F28914.S580
 F28914.S569
 F28914.S571
 F28914.S413
 F28914.S581
 F28914.S091
 F28914.S256
 F28914.S096
 F28914.S094
 F28914.S093
 F28914.S097
 F28914.S101
 F28914.S099
 F28914.S264
 F28914.S251
 F28914.S253
 F28914.S254
 F28914.S104
 F28914.S262
 F28914.S257
 F28914.S259

Samples

Order