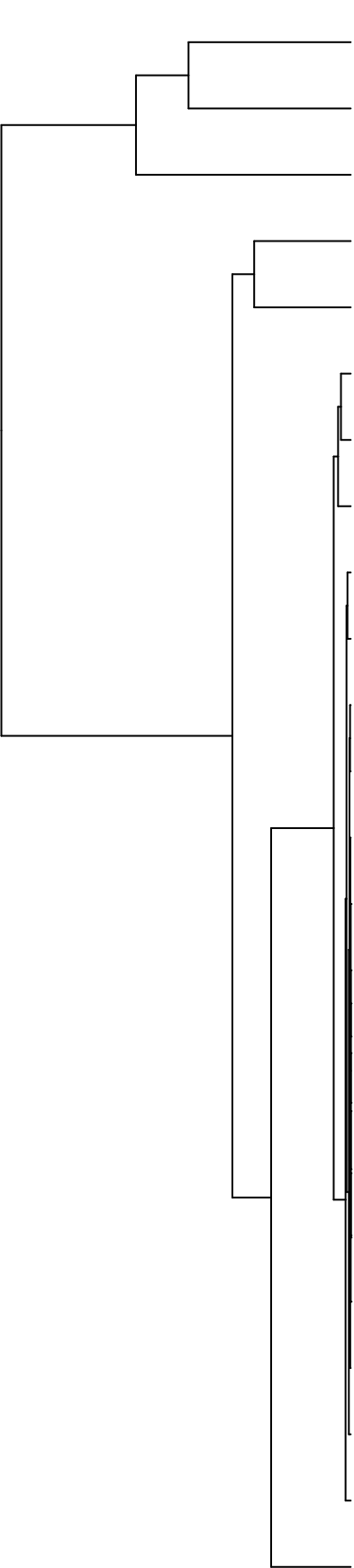


Group006
■ A Final -PMA
■ F Final -PMA



Veillonellales
 Pasteurellales
 Lactobacillales
 Neisseriales
 Fusobacteriales
 Campylobacteriales
 Actinomycetales
 Bacteroidales
 Bacillales
 Micrococcales
 Erysipelotrichales
 Saccharibacteria_(TM7)_[O-1]
 Coriobacteriales
 Flavobacteriales
 Sphingomonadales
 Propionibacteriales
 Hyphomicrobiales
 Absconditabacteria_(SR1)_[O-1]
 Cytophagales
 Corynebacteriales
 Burkholderiales
 Pseudomonadales
 Eubacteriales
 Enterobacteriales

F28914.S396
 F28914.S393
 F28914.S394
 F28914.S593
 F28914.S437
 F28914.S398
 F28914.S556
 F28914.S399
 F28914.S400
 F28914.S554
 F28914.S438
 F28914.S559
 F28914.S558
 F28914.S560
 F28914.S075
 F28914.S275
 F28914.S076
 F28914.S078
 F28914.S120
 F28914.S235
 F28914.S234
 F28914.S116
 F28914.S236
 F28914.S113
 F28914.S277
 F28914.S073
 F28914.S118
 F28914.S274
 F28914.S238
 F28914.S240

Samples

Order