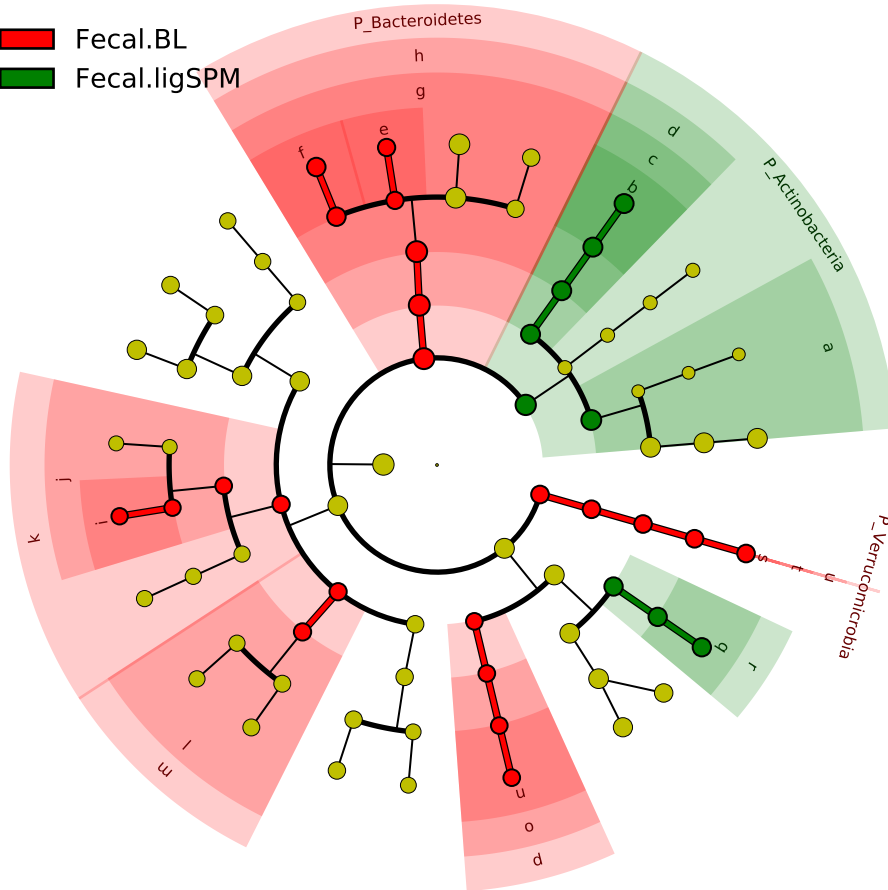


Significantly Represented Taxa

Fecal.BL

Fecal.ligSPM



- a: C_Actinobacteria
- b: F_Propionibacteriaceae
- c: O_Actinomycetales
- d: C_multiclass
- e: F_Porphyrimonadaceae
- f: F_Rikenellaceae
- g: O_Bacteroidales
- h: C_Bacteroidia
- i: F_Oscillospiraceae
- j: O_Eubacteriales
- k: C_Clostridia
- l: O_Erysipelotrichales
- m: C_Erysipelotrichi
- n: F_Alcaligenaceae
- o: O_Burkholderiales
- p: C_Betaproteobacteria
- q: F_Moraxellaceae
- r: O_Pseudomonadales
- s: F_Akkermansiaceae
- t: O_Verrucomicrobiales
- u: C_Verrucomicrobiae