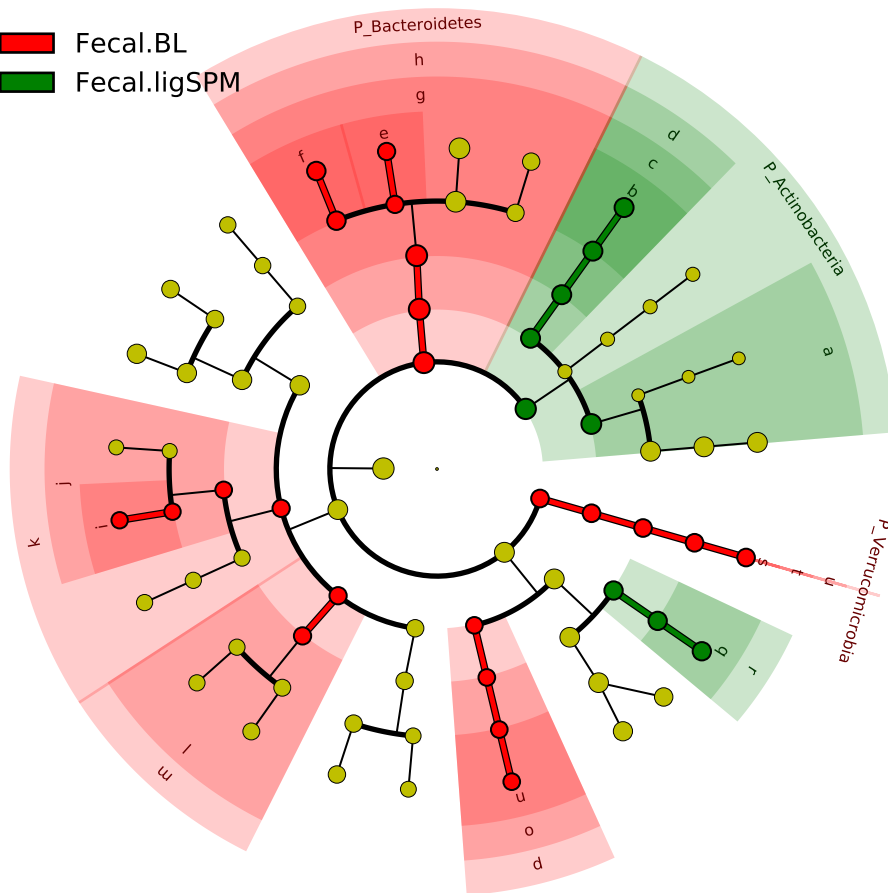


# Significantly Represented Taxa

Fecal.BL

Fecal.ligSPM



- a: C\_Actinobacteria
- b: F\_Propionibacteriaceae
- c: O\_Actinomycetales
- d: C\_multiclass
- e: F\_Porphyromonadaceae
- f: F\_Rikenellaceae
- g: O\_Bacteroidales
- h: C\_Bacteroidia
- i: F\_Oscillospiraceae
- j: O\_Eubacteriales
- k: C\_Clostridia
- l: O\_Erysipelotrichales
- m: C\_Erysipelotrichi
- n: F\_Alcaligenaceae
- o: O\_Burkholderiales
- p: C\_Betaproteobacteria
- q: F\_Moraxellaceae
- r: O\_Pseudomonadales
- s: F\_Akkermansiaceae
- t: O\_Verrucomicrobiales
- u: C\_Verrucomicrobiae