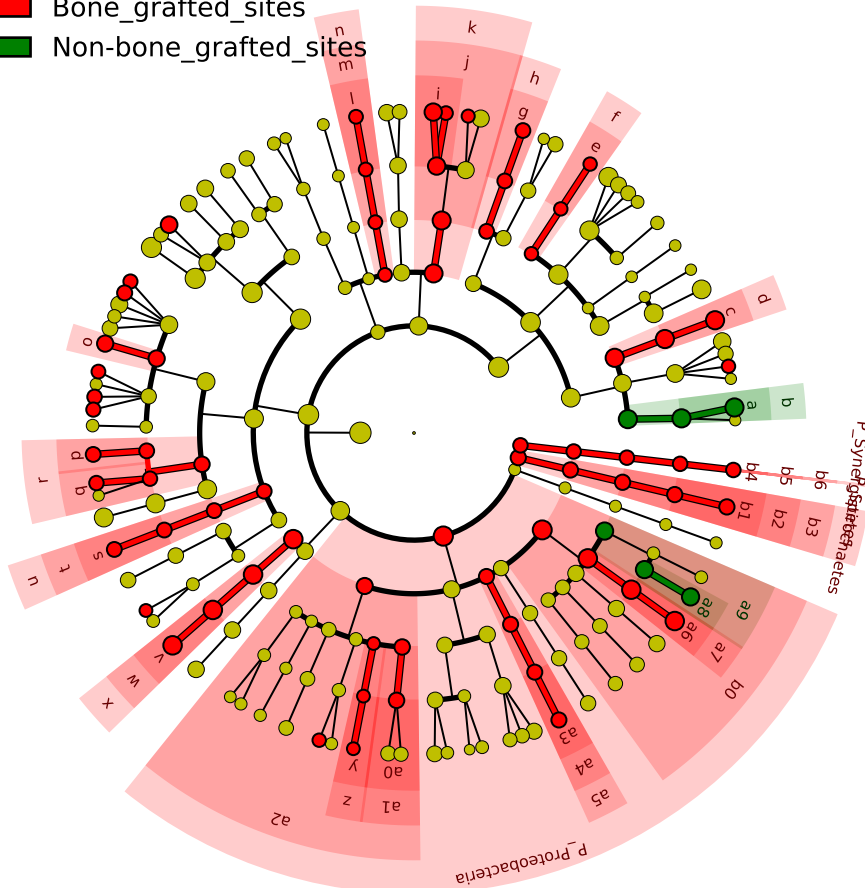


# Significantly Represented Taxa

■ Bone\_grafted\_sites  
■ Non-bone\_grafted\_sites



a: F\_Actinomycetaceae  
 b: O\_Actinomycetales  
 c: F\_Propionibacteriaceae  
 d: O\_Propionibacteriales  
 e: F\_Pseudonocardiaceae  
 f: O\_Pseudonocardiales  
 g: F\_Eggerthellaceae  
 h: O\_Eggerthellales  
 i: F\_Prevotellaceae  
 j: O\_Bacteroidales  
 k: C\_Bacteroidia  
 l: F\_Bacteroidaceae  
 m: O\_Bacteroidales  
 n: C\_Bacteroidia  
 o: F\_Peptoniphilaceae  
 p: F\_Eubacteriaceae  
 q: F\_Peptostreptococcaceae  
 r: O\_Eubacteriales  
 s: F\_Erysipelotrichaceae  
 t: O\_Erysipelotrichales  
 u: C\_Erysipelotrichia  
 v: F\_Fusobacteriaceae  
 w: O\_Fusobacteriales  
 x: C\_Fusobacteria  
 y: F\_Geminicoccaceae  
 z: O\_Rhodospirillales  
 a0: F\_Sphingomonadaceae  
 a1: O\_Sphingomonadales  
 a2: C\_Alphaproteobacteria  
 a3: F\_Desulfovibrionaceae  
 a4: O\_Desulfovibrionales  
 a5: C\_Deltaproteobacteria  
 a6: F\_Pasteurellaceae  
 a7: O\_Pasteurellales  
 a8: F\_Moraxellaceae  
 a9: O\_Pseudomonadales  
 b0: C\_Gammaproteobacteria  
 b1: F\_Treponemataceae  
 b2: O\_Spirochaetales  
 b3: C\_Spirochaetia  
 b4: F\_Synergistaceae  
 b5: O\_Synergistales  
 b6: C\_Synergistia