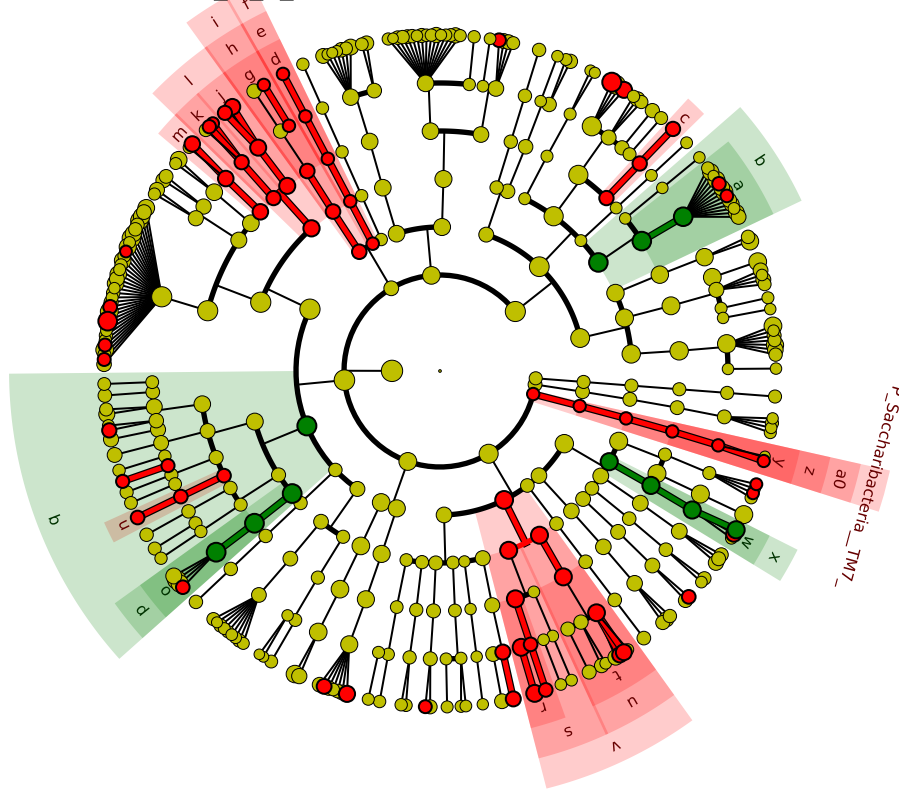


# Significantly Represented Taxa

Prosthesis\_<\_1\_year  
Prosthesis\_>\_1\_year



- a: F\_Actinomycetaceae
- b: O\_Actinomycetales
- c: F\_Microbacteriaceae
- d: F\_Spirosomaceae
- e: O\_Cytophagales
- f: C\_Cytophagia
- g: F\_Weeksellaceae
- h: O\_Flavobacteriales
- i: C\_Flavobacteriia
- j: F\_Gemellaceae
- k: F\_Staphylococcaceae
- l: O\_Bacillales
- m: F\_Aerococcaceae
- n: F\_Ruminococcaceae
- o: F\_Veillonellaceae
- p: O\_Negativicutes
- q: C\_Clostridia
- r: F\_Burkholderiaceae
- s: O\_Burkholderiales
- t: F\_Neisseriaceae
- u: O\_Neisseriales
- v: C\_Betaproteobacteria
- w: F\_Pasteurellaceae
- x: O\_Pasteurellales
- y: F\_Saccharibacteria\_TM7
- z: O\_Saccharibacteria\_TM7
- a0: C\_Saccharibacteria\_TM7