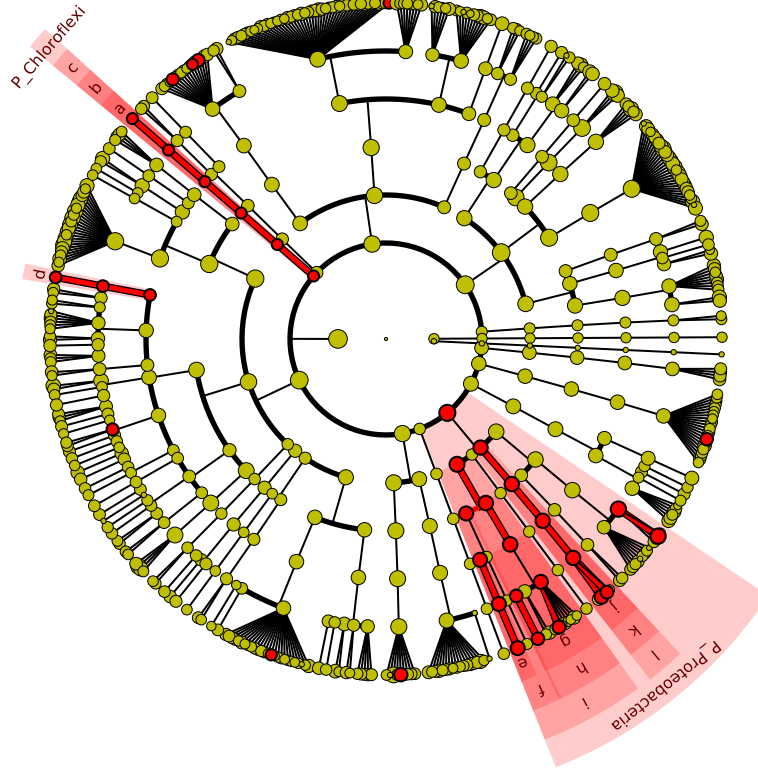


# Significantly Represented Taxa

Smoker\_24\_Weeks\_P1



- a: F\_Anaerolineaceae
- b: O\_Anaerolineales
- c: C\_Anaerolineae
- d: F\_Clostridiales\_F\_1
- e: F\_Burkholderiaceae
- f: O\_Burkholderiales
- g: F\_Neisseriaceae
- h: O\_Neisseriales
- i: C\_Betaproteobacteria
- j: F\_Campylobacteraceae
- k: O\_Campylobacterales
- l: C\_Epsilonproteobacteria