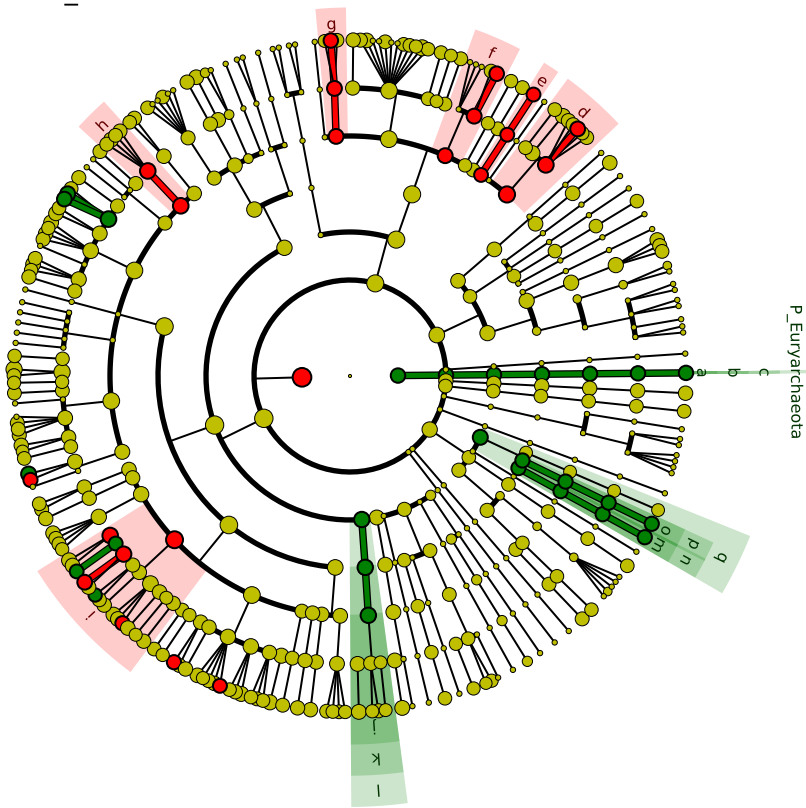
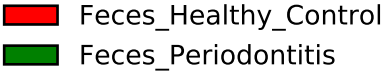


## Significantly Represented Taxa



- a: F\_Methanobacteriaceae
- b: O\_Methanobacteriales
- c: C\_Methanobacteria
- d: F\_Bacteroidaceae
- e: F\_Barnesiellaceae
- f: F\_Porphyromonadaceae
- g: F\_Rikenellaceae
- h: F\_Eubacteriaceae\_XV
- i: F\_Lachnospiraceae
- j: F\_Erysipelotrichaceae
- k: O\_Erysipelotrichales
- l: C\_Erysipelotrichi
- m: F\_Succinivibrionaceae
- n: O\_Aeromonadales
- o: F\_Enterobacteriaceae
- p: O\_Enterobacteriales
- q: C\_Gammaproteobacteria