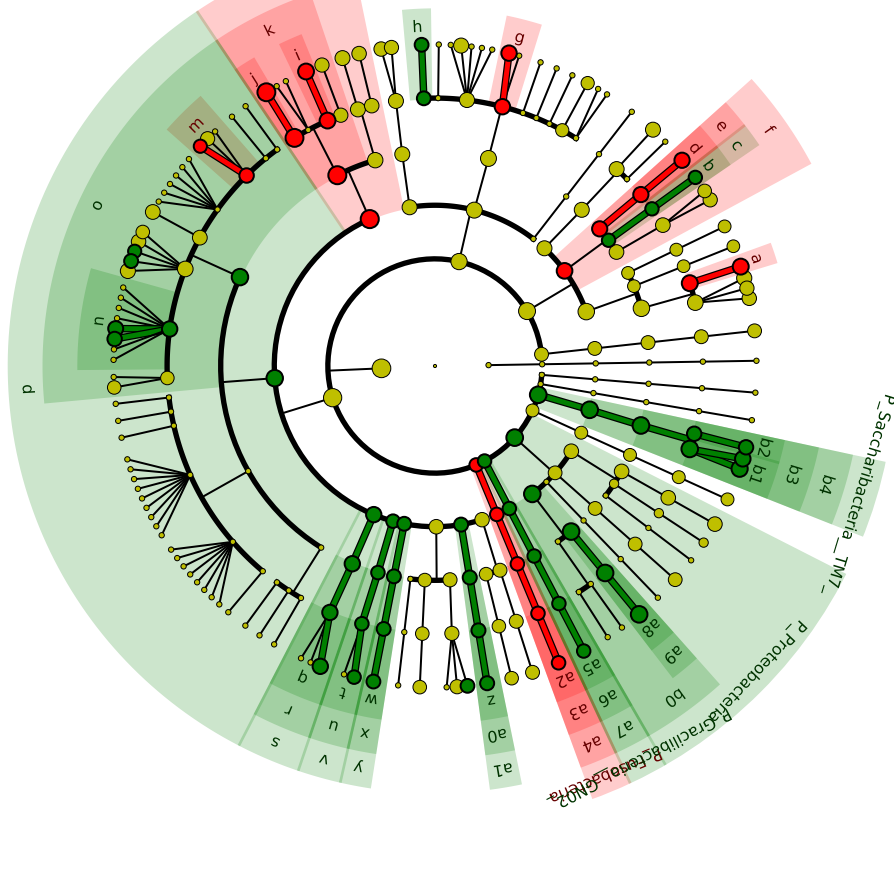


Significantly Represented Taxa

Saliva_Healthy_Control

Saliva_Parkinson_+_Periodontitis



- a: F_Micrococcaceae
- b: F_Corynebacteriaceae
- c: O_Corynebacteriales
- d: F_Micrococcaceae
- e: O_Micrococcales
- f: C_Actinomycetia
- g: F_Porphyrimonadaceae
- h: F_Tannerellaceae
- i: F_Carnobacteriaceae
- j: F_Streptococcaceae
- k: O_Lactobacillales
- l: C_Bacilli
- m: F_Lachnospiraceae_XI
- n: F_Ruminococcaceae
- o: O_Clostridiales
- p: C_Clostridia
- q: F_Erysipelotrichaceae
- r: O_Erysipelotrichales
- s: C_Erysipelotrichi
- t: F_Erysipelotrichaceae
- u: O_Erysipelotrichales
- v: C_Erysipelotrichia
- w: F_Mycoplasmataceae
- x: O_Mycoplasmatales
- y: C_Mollicutes
- z: F_Peptoniphilaceae
- a0: O_Tissierellales
- a1: C_Tissierellia
- a2: F_Fusobacteriaceae
- a3: O_Fusobacteriales
- a4: C_Fusobacteriia
- a5: F_Gracilibacteria_GNO
- a6: O_Gracilibacteria_GNO
- a7: C_Gracilibacteria_GNO
- a8: F_Neisseriaceae
- a9: O_Neisseriales
- b0: C_Betaproteobacteria
- b1: F_Saccharibacteria_TM7
- b2: F_Saccharibacteria_TM7
- b3: O_Saccharibacteria_TM7
- b4: C_Saccharibacteria_TM7