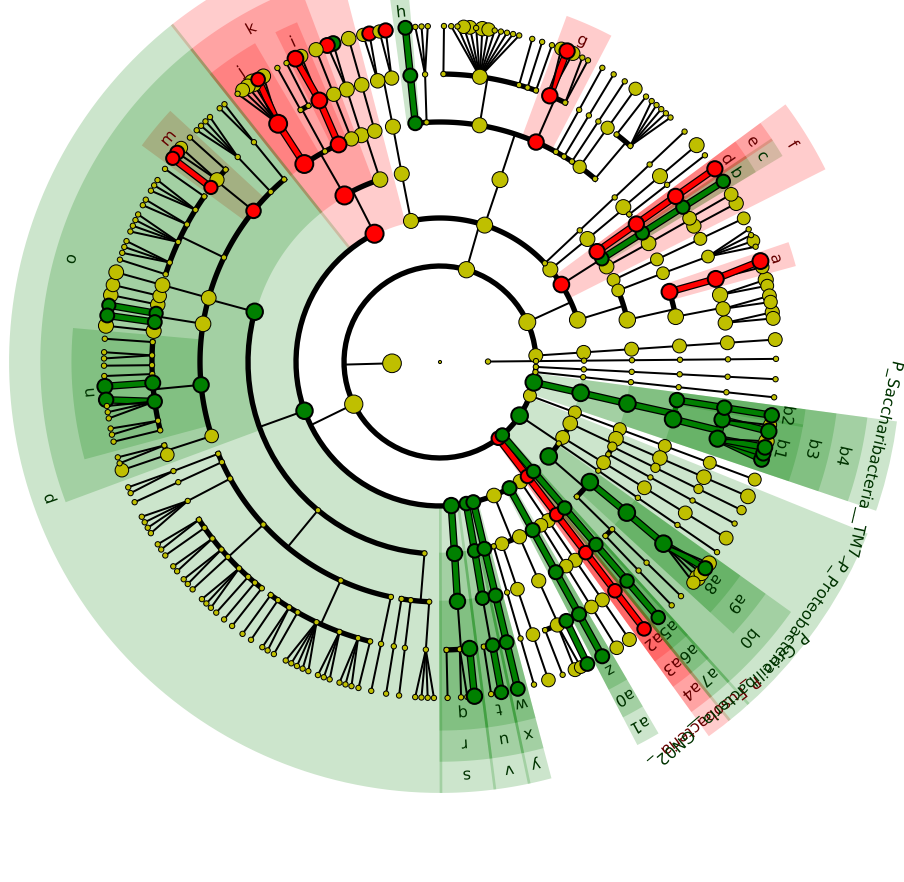


# Significantly Represented Taxa

Saliva\_Healthy\_Control

Saliva\_Parkinson\_+\_Periodontitis



- a: F\_Micrococcaceae
- b: F\_Corynebacteriaceae
- c: O\_Corynebacteriales
- d: F\_Micrococcaceae
- e: O\_Micrococcales
- f: C\_Actinomycetia
- g: F\_Porphyrimonadaceae
- h: F\_Tannerellaceae
- i: F\_Carnobacteriaceae
- j: F\_Streptococcaceae
- k: O\_Lactobacillales
- l: C\_Bacilli
- m: F\_Lachnospiraceae\_XI
- n: F\_Ruminococcaceae
- o: O\_Clostridiales
- p: C\_Clostridia
- q: F\_Erysipelotrichaceae
- r: O\_Erysipelotrichales
- s: C\_Erysipelotrichi
- t: F\_Erysipelotrichaceae
- u: O\_Erysipelotrichales
- v: C\_Erysipelotrichia
- w: F\_Mycoplasmataceae
- x: O\_Mycoplasmatales
- y: C\_Mollicutes
- z: F\_Peptoniophilaceae
- a0: O\_Tissierellales
- a1: C\_Tissierellia
- a2: F\_Fusobacteriaceae
- a3: O\_Fusobacteriales
- a4: C\_Fusobacteriia
- a5: F\_Gracilibacteria\_GNO
- a6: O\_Gracilibacteria\_GNO
- a7: C\_Gracilibacteria\_GNO
- a8: F\_Neisseriaceae
- a9: O\_Neisseriales
- b0: C\_Betaproteobacteria
- b1: F\_Saccharibacteria\_T
- b2: F\_Saccharibacteria\_T
- b3: O\_Saccharibacteria\_T
- b4: C\_Saccharibacteria\_T