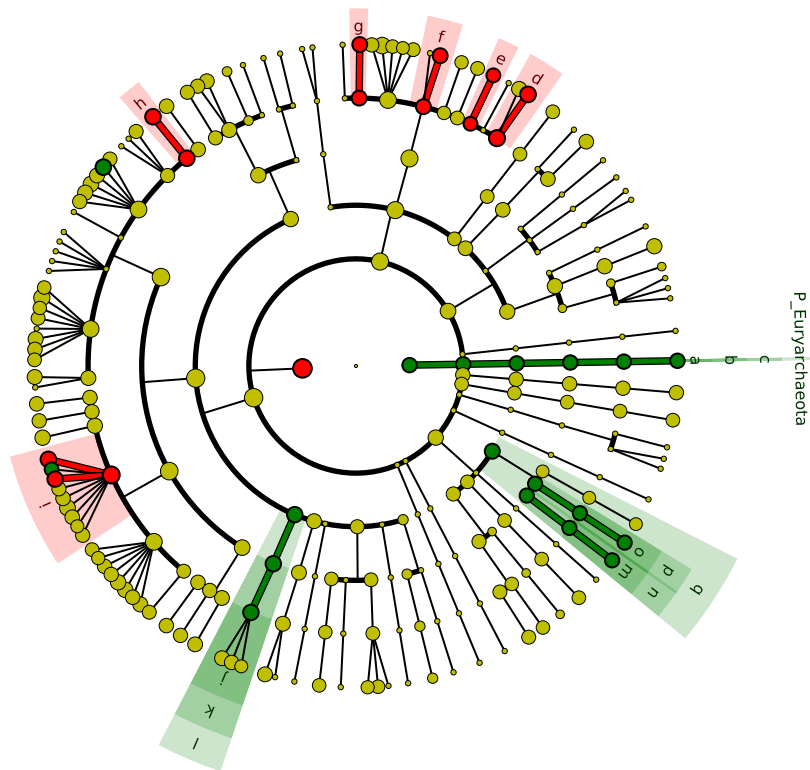


# Significantly Represented Taxa

■ Feces\_Healthy\_Control  
■ Feces\_Periodontitis



■ a: F\_Methanobacteriaceae  
■ b: O\_Methanobacteriales  
■ c: C\_Methanobacteria  
■ d: F\_Bacteroidaceae  
■ e: F\_Barnesiellaceae  
■ f: F\_Porphyromonadaceae  
■ g: F\_Rikenellaceae  
■ h: F\_Eubacteriaceae\_XV\_  
■ i: F\_Lachnospiraceae  
■ j: F\_Erysipelotrichaceae  
■ k: O\_Erysipelotrichales  
■ l: C\_Erysipelotrichi  
■ m: F\_Succinivibrionaceae  
■ n: O\_Aeromonadales  
■ o: F\_Enterobacteriaceae  
■ p: O\_Enterobacterales  
■ q: C\_Gammaproteobacteri