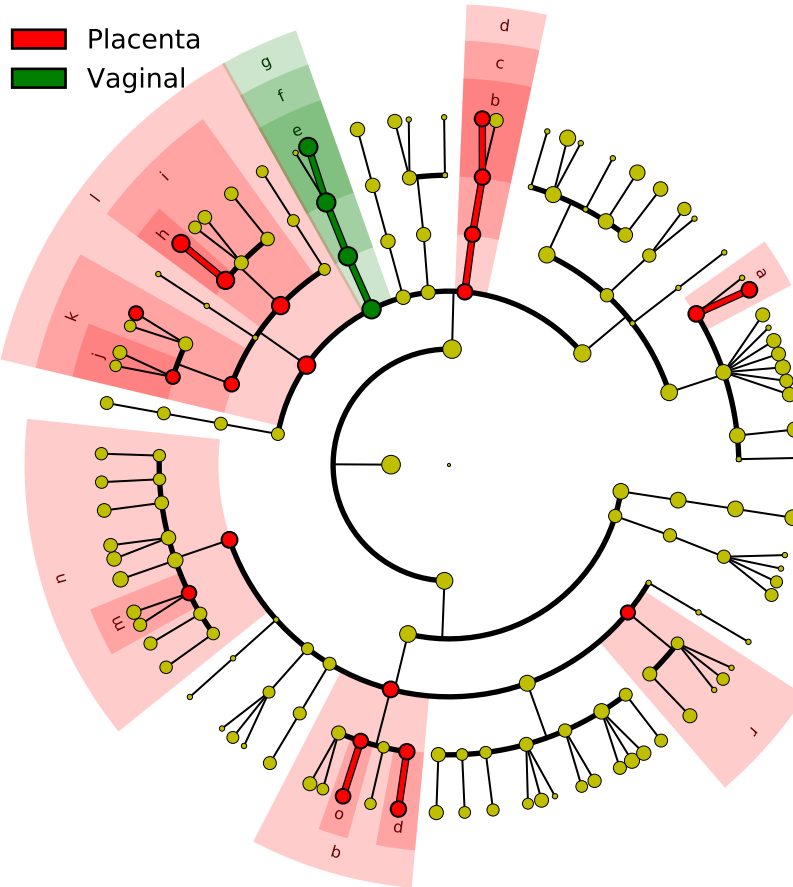


Significantly Represented Taxa



- a: F_Teratosphaeriaceae
- b: F_Trichocomaceae
- c: O_Eurotiales
- d: C_Eurotiomycetes
- e: F_Saccharomycetales_f
- f: O_Saccharomycetales
- g: C_Saccharomycetes
- h: F_Ophiocordycipitaceae
- i: O_Hypocreales
- j: F_Xylariales_fam_Incerta
- k: O_Xylariales
- l: C_Sordariomycetes
- m: F_Psathyrellaceae
- n: O_Agaricales
- o: F_Hymenochaetales_fam
- p: F_Schizoporaceae
- q: O_Hymenochaetales
- r: O_Russulales