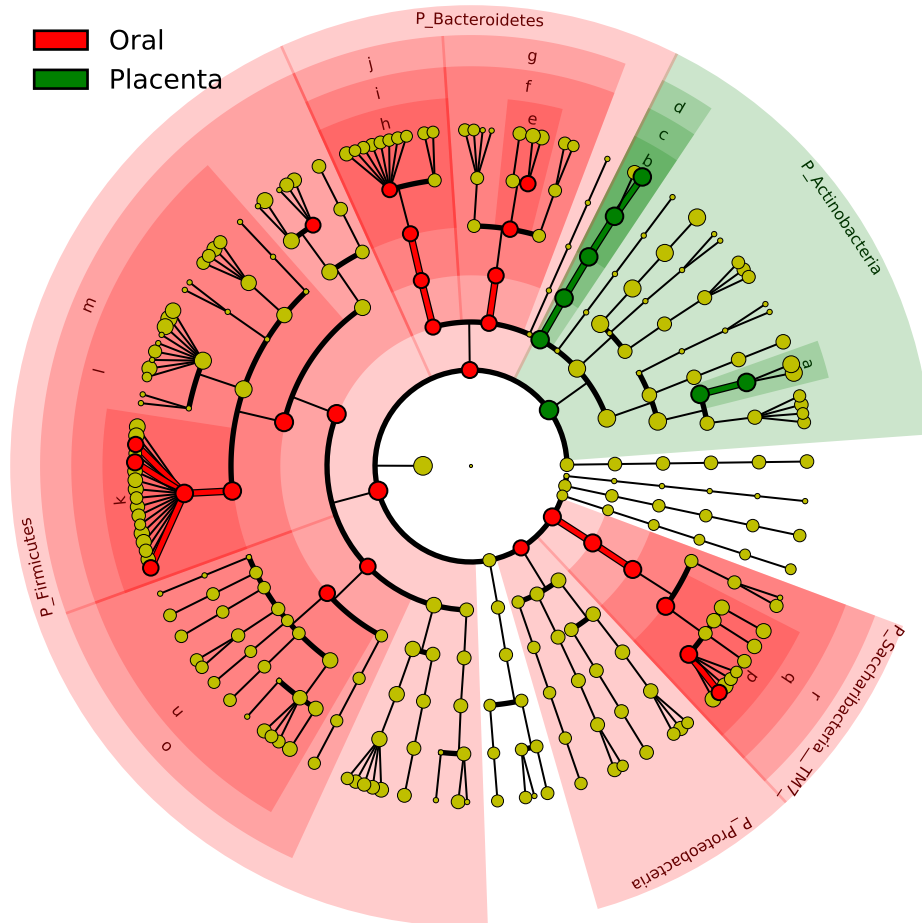


Significantly Represented Taxa



- a: F_Corynebacteriaceae
- b: F_Corynebacteriaceae
- c: O_Actinomycetales
- d: C_multiclass
- e: F_Porphyromonadaceae
- f: O_Bacteroidales
- g: C_Bacteroidia
- h: F_Flavobacteriaceae
- i: O_Flavobacteriales
- j: C_Flavobacteriia
- k: F_Streptococcaceae
- l: O_Lactobacillales
- m: C_Bacilli
- n: O_Clostridiales
- o: C_Clostridia
- p: F_Saccharibacteria_TM7
- q: O_Saccharibacteria_TM7
- r: C_Saccharibacteria_TM7