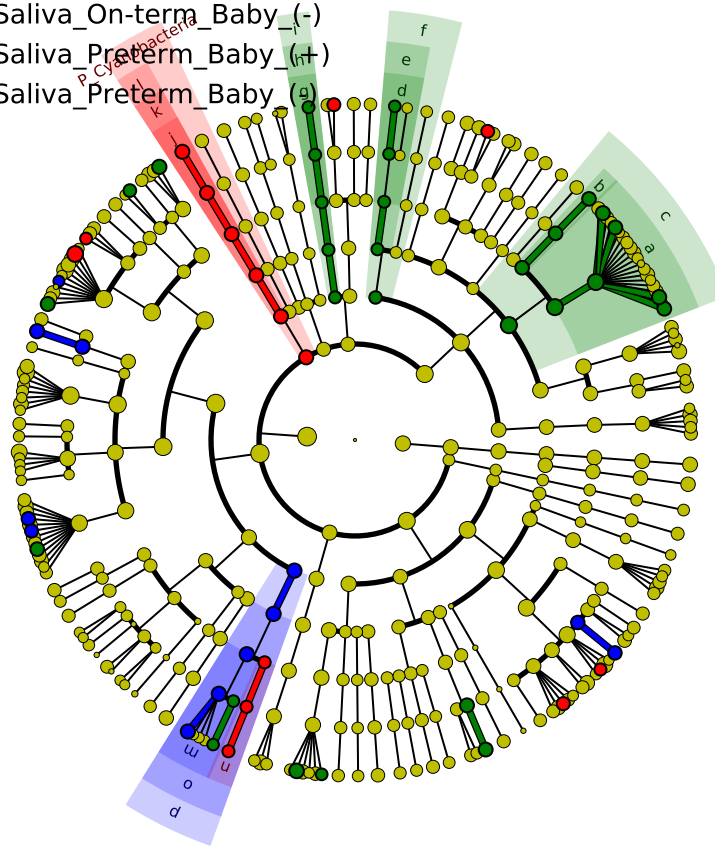


# Significantly Represented Taxa

- Saliva\_On-term\_Baby (-)
- Saliva\_Preterm\_Baby (+)
- Saliva\_Preterm\_Baby (-)



- a: F\_Corynebacteriaceae
- b: F\_Lawsonellaceae
- c: O\_Corynebacteriales
- d: F\_Eggerthellaceae
- e: O\_Eggerthellales
- f: C\_Coriobacteriia
- g: F\_Flavobacteriaceae
- h: O\_Flavobacteriales
- i: C\_Flavobacteriia
- j: F\_Oscillatoriales
- k: O\_Oscillatoriophycideae
- l: C\_Oscillatoriophycideae
- m: F\_Erysipelotrichaceae
- n: F\_Turicibacteraceae
- o: O\_Erysipelotrichales
- p: C\_Erysipelotrichia