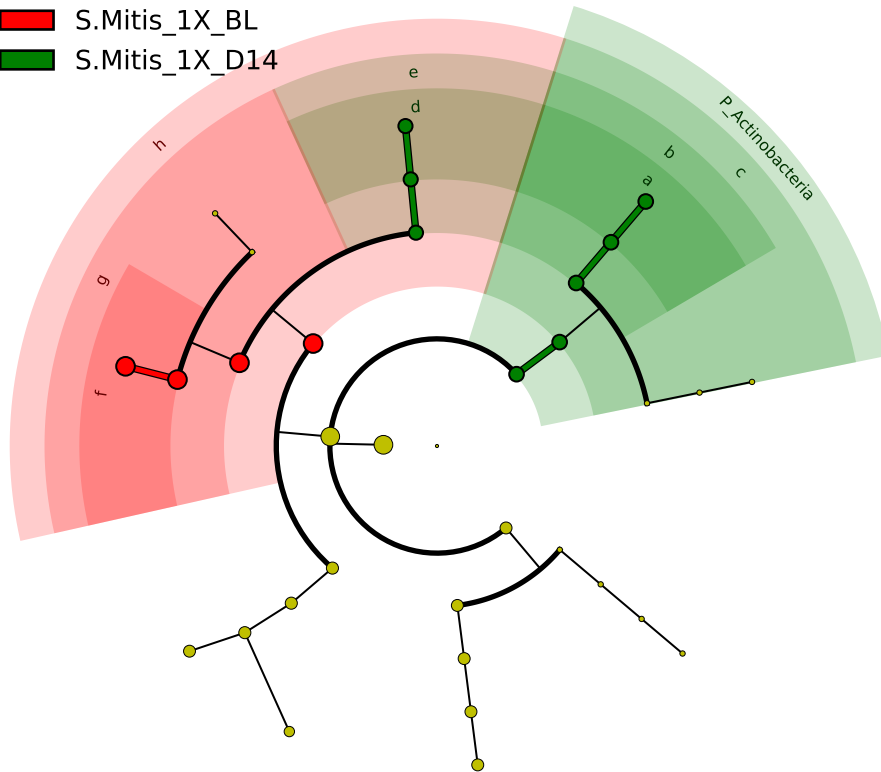


Significantly Represented Taxa

■ S.Mitis_1X_BL

■ S.Mitis_1X_D14



- a: F_Corynebacteriaceae
- b: O_Corynebacteriales
- c: C_Actinobacteria
- d: F_Staphylococcaceae
- e: O_Bacillales
- f: F_Streptococcaceae
- g: O_Lactobacillales
- h: C_Bacilli