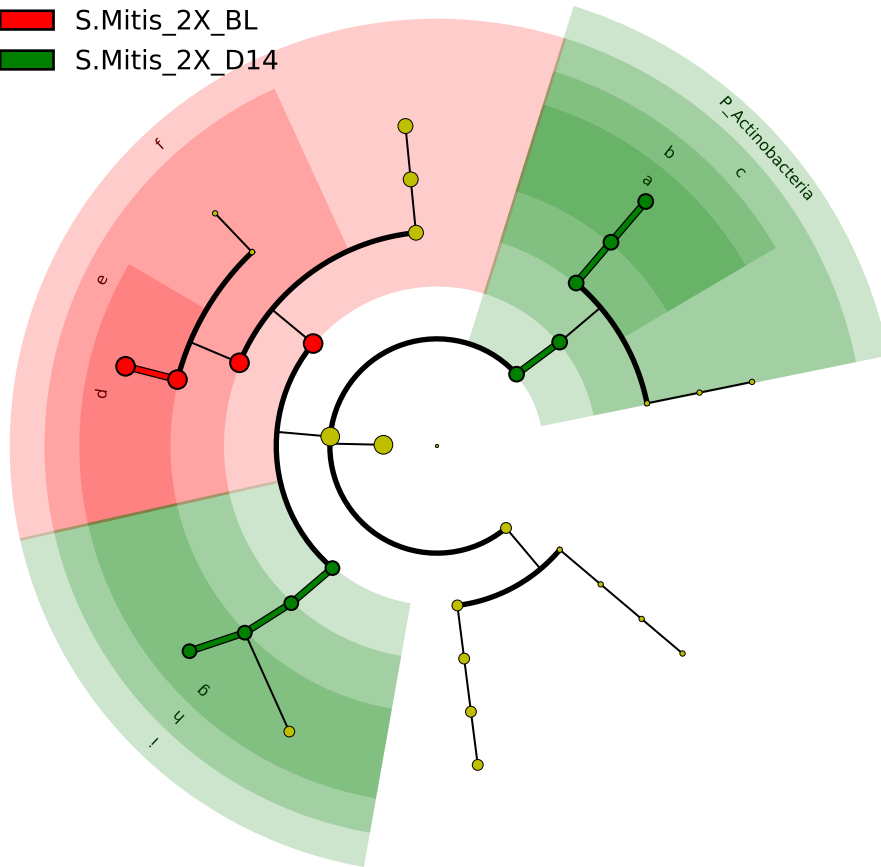


Significantly Represented Taxa

■ S.Mitis_2X_BL

■ S.Mitis_2X_D14



- a: F_Corynebacteriaceae
- b: O_Corynebacteriales
- c: C_Actinobacteria
- d: F_Streptococcaceae
- e: O_Lactobacillales
- f: C_Bacilli
- g: F_Erysipelotrichaceae
- h: O_Erysipelotrichales
- i: C_Erysipelotrichia