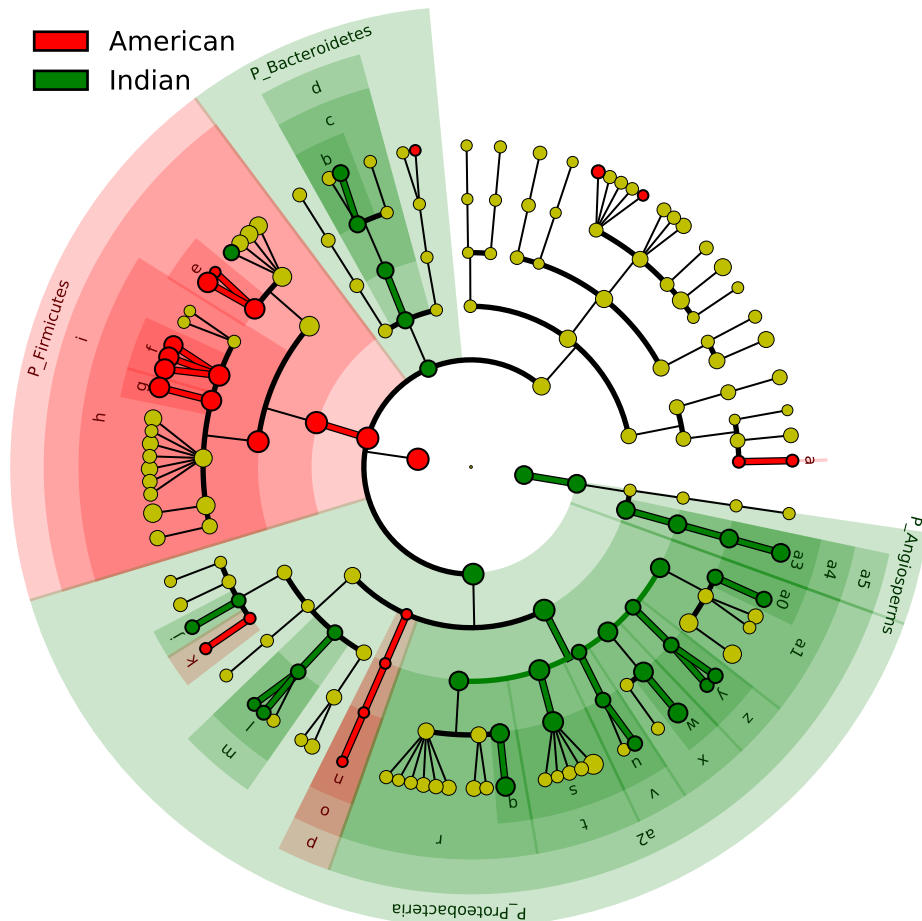


Significantly Represented Taxa



- a: F_Brevibacteriaceae
- b: F_Weeksellaceae
- c: O_Flavobacteriales
- d: C_Flavobacteriia
- e: F_Staphylococcaceae
- f: F_Carnobacteriaceae
- g: F_Enterococcaceae
- h: O_Lactobacillales
- i: C_Bacilli
- j: F_Methylobacteriaceae
- k: F_Rhizobiaceae
- l: F_Rhodobacteraceae
- m: O_Rhodobacterales
- n: F_Alcaligenaceae
- o: O_Burkholderiales
- p: C_Betaproteobacteria
- q: F_Yersiniaceae
- r: O_Enterobacterales
- s: F_Enterobacteriaceae
- t: O_Enterobacteriales
- u: F_Halomonadaceae
- v: O_Oceanospirillales
- w: F_Pseudomonadaceae
- x: O_Pseudomonadales
- y: F_Xanthomonadaceae
- z: O_Xanthomonadales
- a0: F_Yersiniaceae
- a1: O_multioorder
- a2: C_Gammaproteobacteria
- a3: F_Euphorbiaceae
- a4: O_Malpighiales
- a5: C_Eudicots