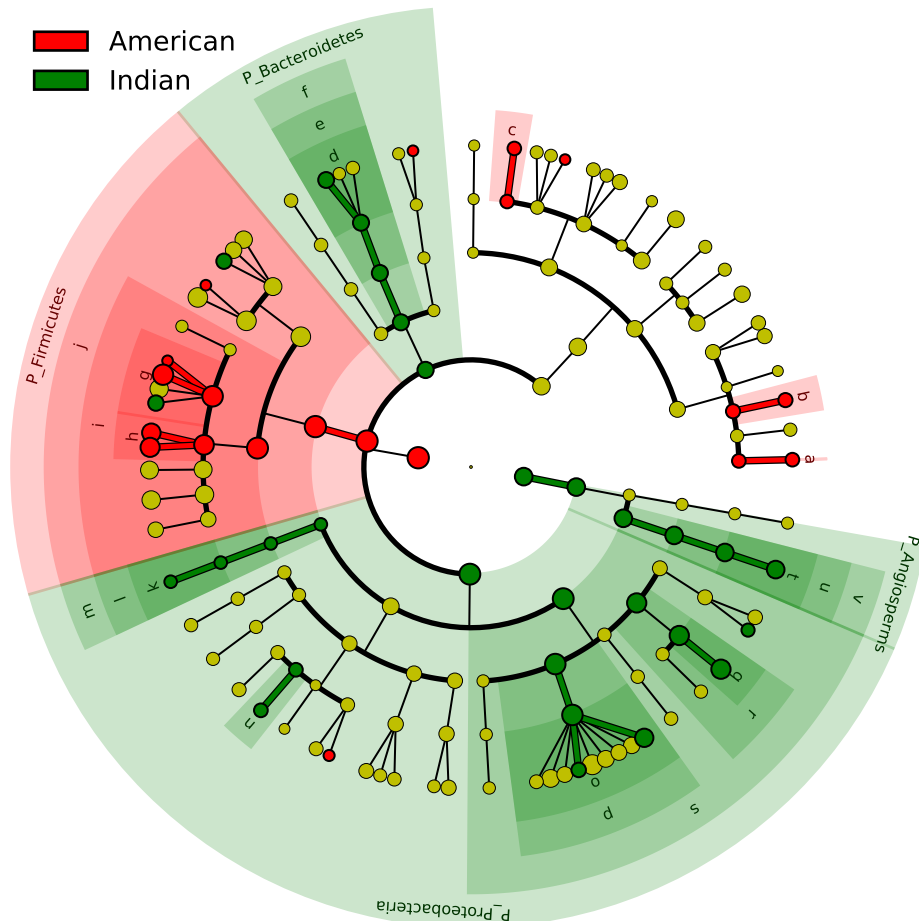


# Significantly Represented Taxa



- a: F\_Actinomycetaceae
- b: F\_Dermacoccaceae
- c: F\_Sanguibacteriaceae
- d: F\_Flavobacteriaceae
- e: O\_Flavobacteriales
- f: C\_Flavobacteria
- g: F\_Carnobacteriaceae
- h: F\_Enterococcaceae
- i: O\_Lactobacillales
- j: C\_Bacilli
- k: F\_Methylobacteriaceae
- l: O\_Rhizobiales
- m: C\_Alphabacteria
- n: F\_Methylobacteriaceae
- o: F\_Enterobacteriaceae
- p: O\_Enterobacteriales
- q: F\_Pseudomonadaceae
- r: O\_Pseudomonadales
- s: C\_Gammaproteobacteri
- t: F\_Euphorbiaceae
- u: O\_Malpighiales
- v: C\_Eudicots